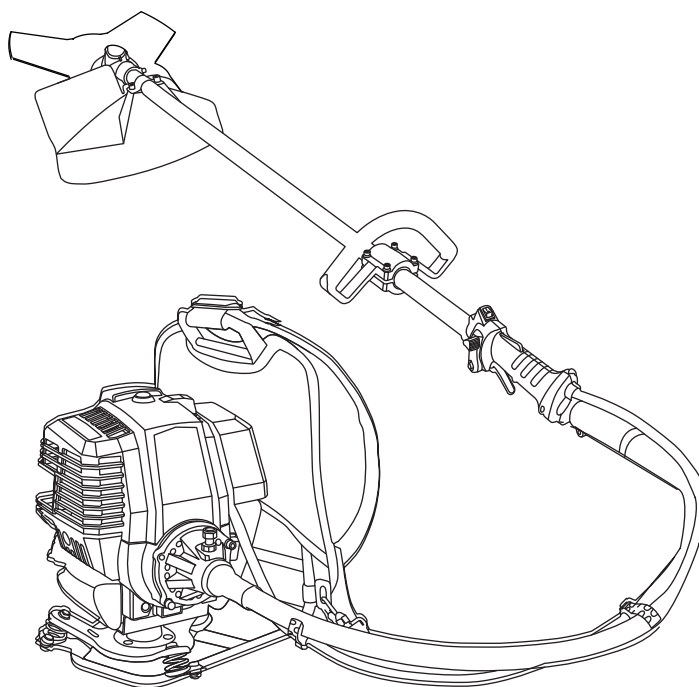




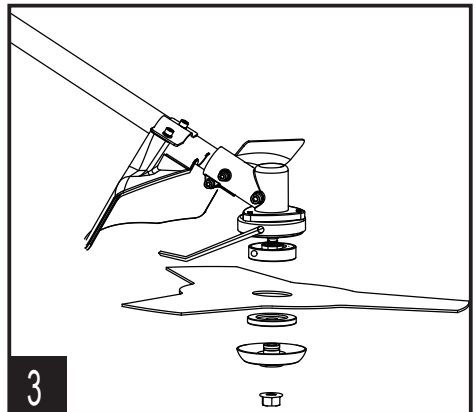
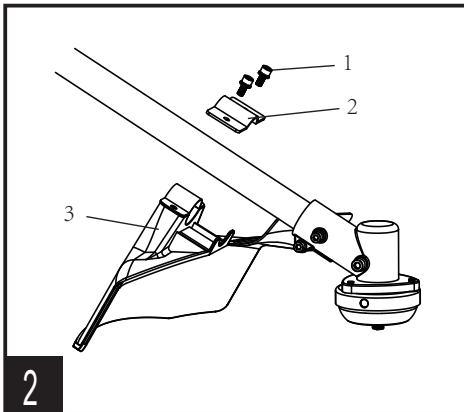
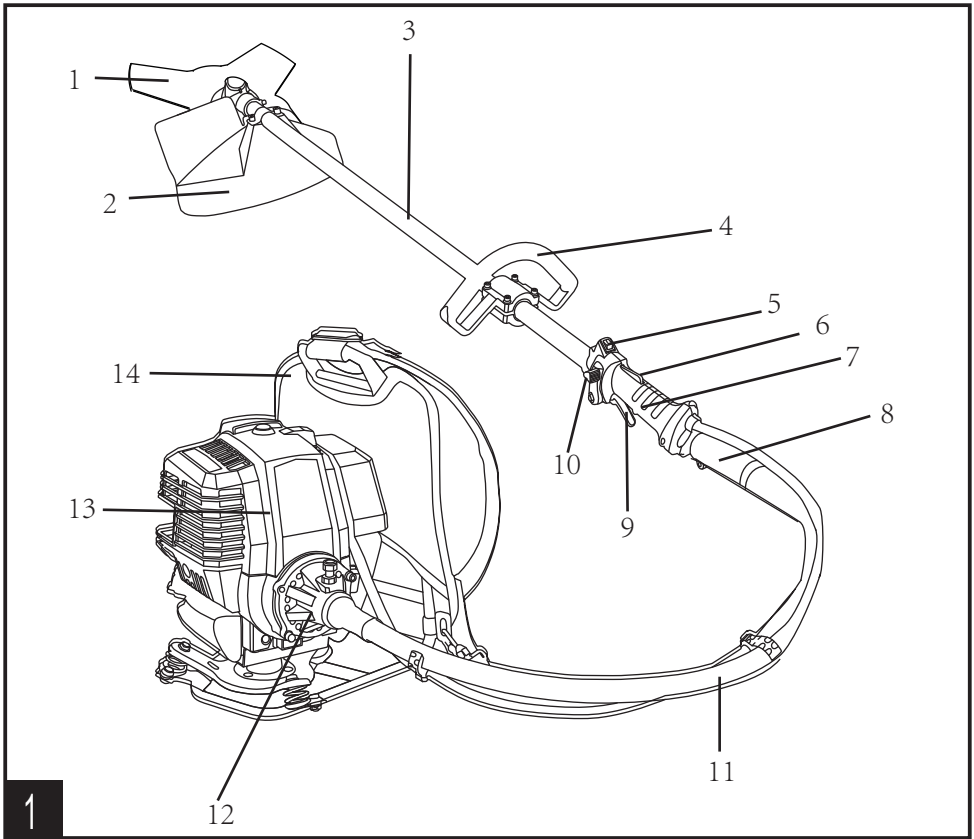
Model: GTBCPU4QL-H

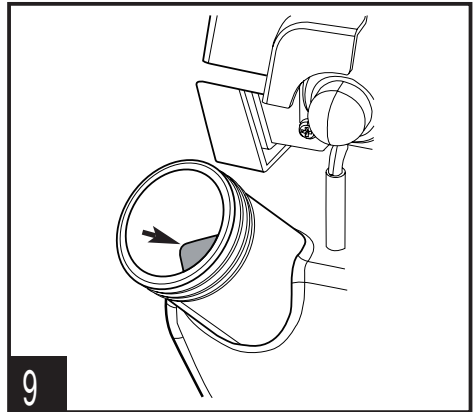
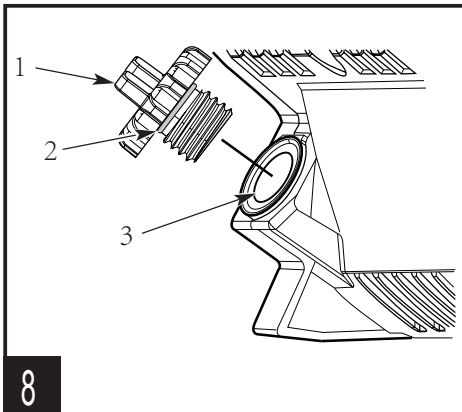
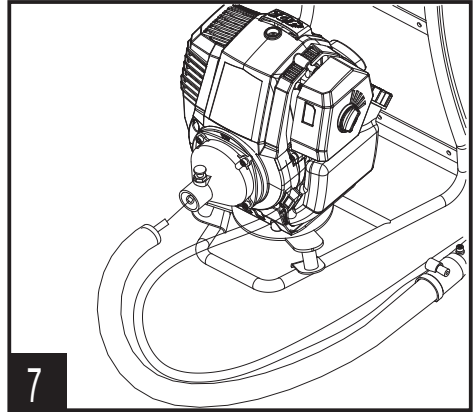
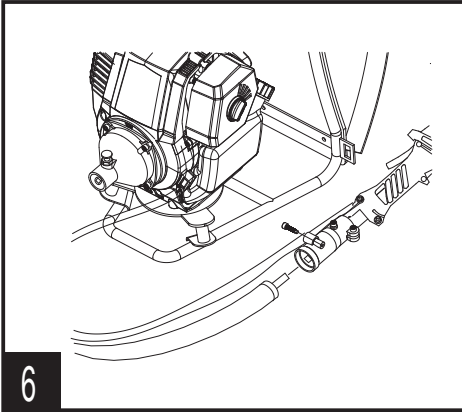
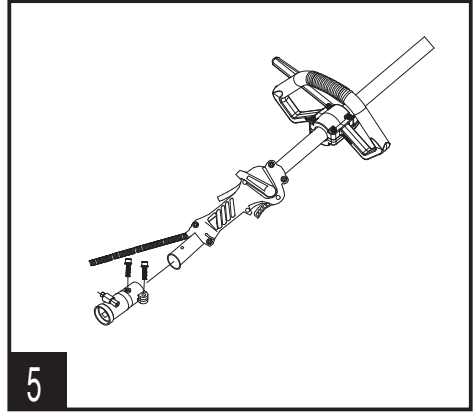
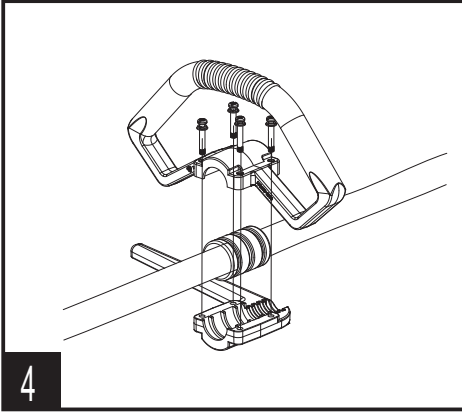
EN Operator's manual
46CC 4QL Brush Cutter



For customer service please find all information on www.senixtools.com
CAUTION: BEFORE USING THIS PRODUCT, READ THIS MANUAL AND
FOLLOW ALL ITS SAFETY RULES AND OPERATING INSTRUCTIONS.

ORIGINAL INSTRUCTIONS





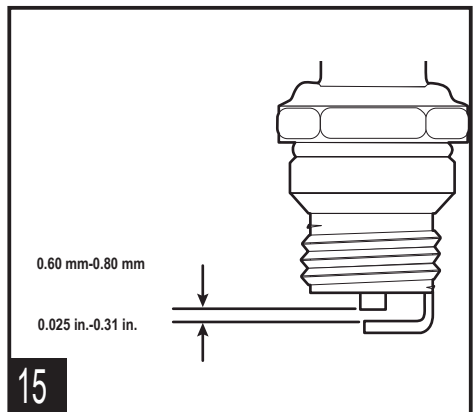
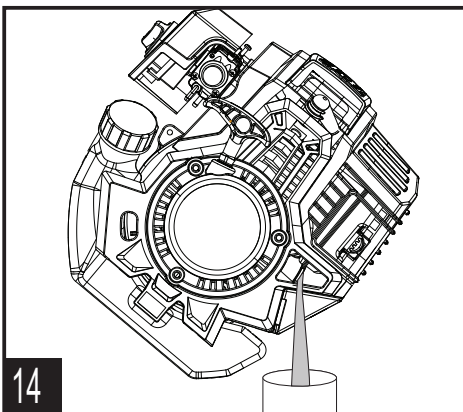
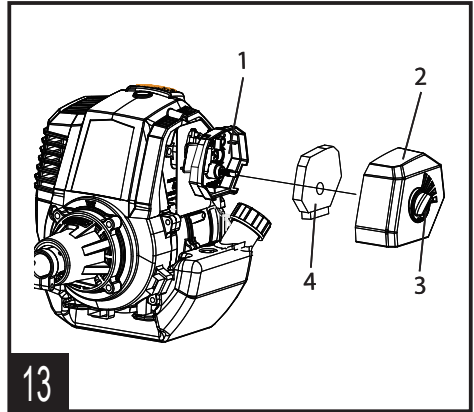
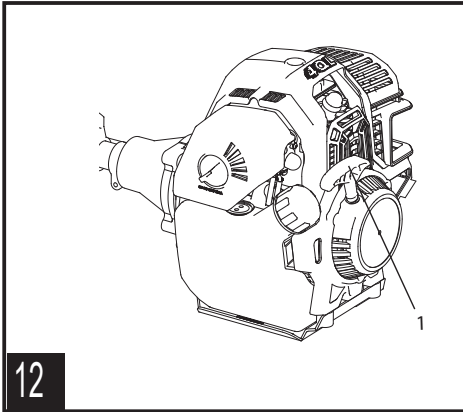
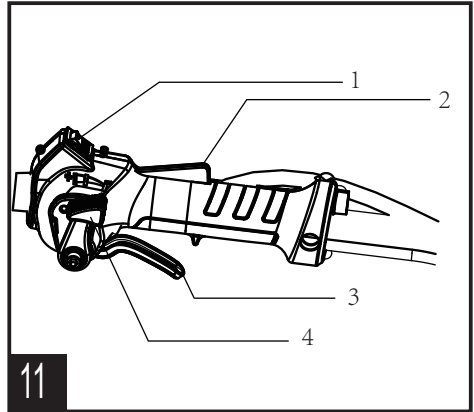
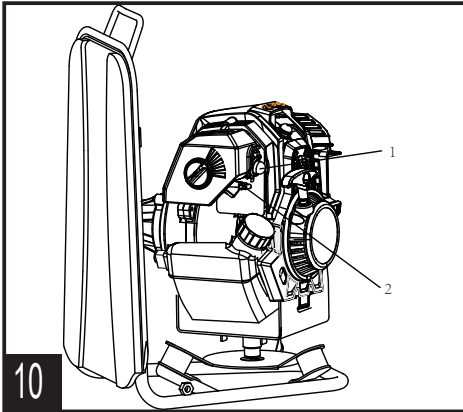


TABLE OF CONTENTS

SAFETY & INTERNATIONAL SYMBOLS	5
SAFETY INSTRUCTIONS.....	6
KNOW YOUR UNIT.....	15
SPECIFICATIONS*.....	15
ASSEMBLY.....	15
OIL AND FUEL.....	16
OPERATION.....	17
MAINTENANCE.....	18
TROUBLESHOOTING.....	21

SAFETY & INTERNATIONAL SYMBOLS

Explanation of Safety & international symbols describes safety and international symbols and pictographs that may appear on this product. Read the operator's manual for complete safety, assembly, operating and maintenance and repair information.



The following symbols are used throughout this manual.

Read the manual. The manual contains information intended to draw attention to possible safety issues and deterioration of the machine as well as helpful tips for getting started, correct the machine use and maintenance. Please respect all of the warnings, explanations and instructions given in this manual for safe and optimal use of this device.



all of the warnings, explanations and instructions given in this manual for safe and optimal use of this device.



Danger! Warning! Attention!
This symbol highlights a danger, a warning or a caution. It indicates that the operator's safety is at risk.



Wear protective equipment.
Wear eye and hearing protection when using the machine.



Wear protective gloves.



Wear Sturdy, non-slip footwear.



Wear tight-fitting protective clothes.



Wear face protection!



Risk of flying objects or debris.
Be aware of that there is a risk of flying objects and/or debris when using the machine.
Keep bystanders away.



Beware of foot injury by cutting attachment.



Beware of objects flung by cutting attachments.
Never use without properly mounted protection guard.



Keep 15 meters away from any other person.



Beware of objects flung by cutting attachments.
Never use without properly mounted protection guard.



Don't install or use any type of blade on the unit displaying this symbol.



This products meets the requirements of the relevant standards.



Guaranteed Sound power level 113 dB(A).



Maximum permitted revolutions of the blade.



Do not touch the line/blade until it stops completely when replacing new blade.

SAFETY INSTRUCTIONS



WARNING:

Signals an **EXTREME** hazard.
Failure to obey a safety **DANGER** symbol **WILL** result in serious injury or death to yourself or to others.



WARNING:

Crude oil, gasoline, diesel fuel and other petroleum products can expose you to chemicals including toluene and benzene, which are known to the State of California to cause cancer and birth defects or other reproductive harm. These exposures can occur in and around oil fields, refineries, chemical plants, transport and storage operations such as pipelines, marine terminals, tank trucks and other facilities and equipment. For more information go to: www.P65Warnings.ca.gov/petroleum.



WARNING:

Signals a **SERIOUS** hazard.
Failure to obey a safety

WARNING symbol **CAN** result in serious injury to yourself or to others.
Signals a **MODERATE** hazard.
Failure to obey a safety **CAUTION** symbol **MAY** result in property damage or injury to yourself or to others.



NOTE:

Advises you of information or instructions vital to the operation or maintenance of the equipment.



NOTE:

Familiarise yourself with the national regulation, it can restrict the use of the machine.



WARNING!

CALIFORNIA PROPOSITION 65

This product contains a chemical known to the state of California to cause cancer, birth defects or other reproductive harm.

Read the operator's manual and follow all warnings and safety instructions. Failure to do so

can result in serious injury to the operator and/or bystanders.

SAFETY WARNINGS



WARNING:

Read all safety warnings and all instructions. Failure to follow the warnings and instructions may result in electric shock, fire and/or serious injury.

Save all warnings and instructions for future reference.

1. Proper safety precautions must be observed. Like all power equipment this unit must be handled carefully. **DO NOT EXPOSE YOURSELF OR OTHERS TO DANGER.** Follow these general rules. Do not permit others to use this unit unless they are thoroughly responsible and have read, and understood the string trimmer manual and are trained in its operation.
2. Always wear safety goggles for eye protection. Dress properly. Do not wear loose clothing or jewelry that could become caught in moving parts of the unit. Safe, sturdy, nonskid footwear should always be worn. Secure hair so it is above shoulder level. It is recommended that legs and feet be covered to protect from flying debris during operation.
3. Inspect the entire unit for loose parts (nuts, bolts, screws, etc.) and any damage before start and operation. Repair or replace as necessary before using the machine.
4. **DO NOT USE** any attachment with this power head other than the ones recommended by the manufacturer. Serious injury to the operator or bystanders could result as well as damage to the machine.
5. Keep the handles free from oil and fuel.
6. Do not operate the unit in insufficient lighting conditions.
7. Do not operate the unit when you are tired, when your concentration is impaired and/or under the influence of drugs, medication, or alcohol.
8. Always use proper handles when trimming.
9. Do not smoke while filling tank.
10. Do not fill fuel in an enclosed room or near open flames. Ensure adequate ventilation.
11. Always store fuel in a properly marked container that is approved by local codes and ordinances for such usage.
12. Never remove the fuel tank cap while the engine is running.

13. Never start or run the product inside a closed room or building. Fumes from the exhaust contain dangerous carbon monoxide.
14. Never attempt to make engine adjustments while the unit is running. Always make engine adjustments with the unit resting on a flat, clear surface.
15. Do not use the unit if it is damaged or poorly adjusted. Never remove the unit's guard. Serious injury to the operator or bystanders could result as well as damage to the machine.
16. Inspect the area to be cut and remove all debris that could become entangled in the nylon cutting head. Also remove any objects that the unit may throw during cutting.
17. Keep children away. Onlookers should be kept at a safe distance from the work area, at least 15 METERS (50 FEET) away.
18. Never leave the unit unattended while the engine is running.
19. Do not use this unit for any job other than those for which it is intended as described in this manual.
20. Do not overreach. Keep proper footing and balance at all times. Do not use the unit while standing on a ladder or on any other unstable footing location.
21. Keep hands and feet a safe distance from the nylon cutting line while unit is in use.
22. Do not use this type of unit for sweeping away debris.
23. Use nylon cutting head which is free of damage. If a stone or any other obstacle is hit, stop the engine and check the nylon cutting head. A broken or unbalanced nylon cutting head must never be used.
24. FOLLOW INSTRUCTIONS for assembling and operation.
25. Do not store the unit in a closed area where fuel vapors can reach an open flame from hot water heaters, furnaces, etc. Store in a locked, well ventilated area only.
26. Ensure safe and proper performance of your unit. Please only use original accessories. The use of any other accessories or attachments may cause a potential hazard or injury to the user, damage to the unit, and void the warranty.
27. If the unit will not be used for a long time, clean the unit completely, especially the fuel/oil tank, its surroundings, and the air filter.
28. When refueling, stop the engine and confirm that it is cooled

down. Never refuel when the engine is running or hot. When gasoline spills, be sure to wipe it up completely and dispose of those materials before starting the engine.

29. Stay clear of other workers or bystanders by at least 15 meters/50 feet.
30. Whenever approaching an operator of the unit, carefully call their attention and confirm that the operator stops the engine. Be careful not to startle or distract the operator which can cause an unsafe situation.
31. Never touch the nylon cutting head whenever the engine is running. If it is necessary to adjust the protector or nylon cutting head, make sure to stop the engine and confirm that the nylon cutting head has stopped running.
32. The engine should be turned off when the unit is moved between work areas.
33. Be careful not to hit the nylon cutting head against stones, or the ground. Unreasonable rough operation will shorten the life of the unit as well as create an unsafe environment for yourself and those around you.
34. Pay attention to loosening and overheating parts. If there is any abnormality of the unit, stop operation immediately and check the unit carefully. If necessary, have the unit serviced by customer support. Never continue to operate a unit which may be malfunctioning.
35. In start-up or during operation of the engine, never touch hot parts such as the muffler, the high voltage wire, or the spark plug.
36. After the engine has stopped, the muffler is still hot. Never place the unit in any places where there are flammable materials (dry grass, etc.), combustible gasses, or combustible liquids.
37. Pay special attention to operation in the rain or just after the rain as the ground may be slippery.
38. If you slip or fall to the ground, release the throttle lever immediately.
39. Be careful not to drop the unit or hit it against obstacles.
40. Before proceeding to adjust or repair the unit, be sure to stop the engine and detach the spark plug.
41. When the machine is placed in storage for a long time, drain fuel/oil from the fuel/oil tank and carburetor, clean the parts, and move the machine to a safe place.

42. Make periodic inspections to ensure safe and efficient operation. For a thorough inspection of your unit, contact customer support.
43. Keep the unit away from fire or sparks.
44. Keep your body warm, especially the head, neck, feet, ankles, hands, and wrists.
45. Maintain good blood circulation by performing vigorous arm exercises during frequent work breaks and also by not smoking.
46. Limit the hours of operation.
47. If you experience discomfort, redness and swelling of the fingers followed by whitening and loss of feeling, consult your physician before further exposing yourself to cold and vibration.
48. Always wear ear protection. Loud noises for long periods can cause hearing loss, even permanent deafness.
49. Wear no-slip heavy duty work gloves to improve your grip on the handle. Gloves also reduce the transmission of machine vibration to your hands.
50. Do not lay the machine on the side; otherwise the fuel could spill out.
51. Fuel evaporation during refueling and exhaust gases

are harmful to the operator and people around the unit.

52. Make sure that the fuel evaporation and exhaust gases will not drift to the face of operator and keep other people away from your working area.
53. Do not allow children or untrained individuals to use this unit.



WARNING:

Beware of kickback! Kickback can lead to dangerous loss of control of the product and result in serious or fatal injury to the operator or anyone standing close by! Always be alert because rotational kickback and pinch kickback are major product operational dangers and the leading cause of most accidents!

ADDITIONAL INSTRUCTIONS

- Do not use any fuel other than that recommended in the operating instructions. Always follow the instructions in the section “fuel and oil”. Do not use petrol that has not been mixed correctly with 2-stroke oil. Otherwise there is a risk of causing permanent damage to the engine and of voiding the manufacturer’s guarantee.
- Do not smoke while refueling or

using the equipment.

- Never use the equipment without the exhaust pipe.
- Do not touch the exhaust pipe with your hands or body. Hold the equipment so that your fingers and thumbs are wrapped around the handle.
- Do not use the equipment in an uncomfortable posture, off balance, with extended arms or with only one hand. Use two hands and the harness hold the machine ,left hand holds handle,right hand holds shaft grip, keep firm footing and balance during operation. Have a break after operating the machine per hour, change working position should avoid slope.

Always use both hands on the equipment and wrap your fingers and thumbs around the handles.

- Always keep the line spool on the ground whilst the equipment is in operation.
- Use the equipment only for the purpose for which it is intended, such as trimming and mowing weeds.
- Do not use the equipment over a lengthy period of time - take regular breaks.
- Do not use the equipment when under the influence of alcohol or

drugs.

- Use the equipment only when the guard hood is fitted and in good working order.
- Any modifications to the product may place your personal safety at risk and cause the manufacturer's warranty to be voided.
- Never use the equipment near inflammable liquids or gases, neither in enclosed rooms nor outdoors. This may cause explosions and/or fire.
- Do not use any other cutting tools. For your own safety you must use only the accessories and attachments which are listed in the operating instructions or which are recommended or specified by the manufacturer. The use of cutting tools or accessories other than those recommended in the operating instructions or catalog may place your personal safety at risk.

SAFETY PRECAUTION FOR HANDLING THE BLADE

- Take note of all warnings and instructions relating to operating and fitting the blade.
- The blade can recoil suddenly from objects if it cannot cut or mow through them.
- This can cause injuries to the arms

- or legs.
- Keep bystanders and animals at least 15 m away from where you are working. If the equipment strikes a foreign body, stop the engine immediately and wait for the blade to come to a standstill. Check the blade for signs of damage. Always replace the blade if it is bent or cracked.
- The blade is liable to catapult away objects with high force. This can cause blindness or injuries. Wear protection on your eyes, face and legs. Always remove objects from your working area before you use the blade.
- Carefully check the equipment and its fittings for signs of damage every time before use.
- Do not use the equipment unless all the blade fittings are installed correctly.
- When you release the throttle lever, the blade will continue to rotate and will only gradually come to a standstill. A blade which is in the process of rotating to a standstill can cause you or bystanders injuries through cutting. Before you start any work on the blade, switch off the engine and ensure that the blade has come to a standstill.
- The danger zone has a radius of 15 meters.
- Bystanders may suffer blindness or injuries.

- Keep a distance of 15 meters between yourself and other people or animals.

VIBRATION AND NOISE REDUCTION

The European Physical Agents (Vibration) Directive has been brought in to help reduce hand arm vibration syndrome injuries to power tool users. The directive requires power tool manufacturers and suppliers to provide indicative vibration test results to enable users to make informed decisions as to the period of time a power tool can be used safely on a daily basis and the choice of tool.

The declared vibration emission values should be used as a minimum level and should be used with the current guidance on vibration.

Calculating the actual period of the actual period off use can be difficult and the HSE website has further information.

The declared vibration emission has been measured in accordance with a standard listed test stated above and may be used to compare one tool with another. The declared vibration emission value may also be used in preliminary assessment of exposure.



WARNING:

The vibration emission value during actual use of the power tool can differ from the declared value depending on the ways in which the tool is used dependant on the following examples and other variation on how the tool is used:

How the tool is used and the materials being ground or cut.

The tool being in good condition and well maintained.

The use the correct accessory for the tool and ensuring it is sharp and in good condition.

The tightness of the grip on the handles.

And the tool is being used as intended by its design and these instructions.

This tool may cause hand-arm vibration syndrome if its use is not adequately managed.



WARNING:

Identify safety measures to protect the operator that are based on an estimation of exposure in the actual condition of use (taking

account of all parts of the operating cycle such as the times when the tool is switched off and when it is running idle in addition to the trigger time.) Note The use of other tools will reduce the users´ total working period on this tool.

INTENDED USE

This engine gasoline powered brush cutter is intended to be used for cutting heavier weeds in domestic gardens. And other optional attachments may be used with this unit. Do not use it for others purposes.

RESIDUAL RISKS



WARNING:

Even when the unit is used as prescribed it is not possible to eliminate all residual risk factors. The following hazards may arise in connection with the unit's construction and design:

- Damage to lungs if an effective

- dust mask is not worn.
- Damage to hearing if effective hearing protection is not worn.
 - Health defects resulting from vibration emission if the unit is being used over long periods of time or not adequately managed and properly maintained.



WARNING:

This unit produces an electromagnetic field during operation. This field may, under some circumstances, interfere with active or passive medical implants. To reduce the risk of serious or fatal injury, we recommend persons with medical implants to consult their physician and the medical implant manufacturer before operating this unit.

KNOW YOUR UNIT

APPLICATIONS

Model: GTBCPU4QL-H

As a 2-in-1 brush cutter:

- For cutting heavier weeds in domestic gardens.

1	Blade	8	Coupler
2	Cutting Head Shield	9	Throttle Control
3	Shaft Housing	10	Cruise Controller
4	Handle	11	Hose
5	On/Off Switch	12	Engine Output Base
6	Throttle Lockout	13	Engine
7	Throttle Grip	14	Frame Carrier

SPECIFICATIONS*

Model	GTBCPU4QL-H
Engine type	Air-Cooled,4-Cycle
Displacement	46cc
Spark plug gap	0.6-0.8mm
Maximum engine power, in accordance with ISO 8893	1.68kw
Maximum rotational frequency of the spindle	10500min ⁻¹
Engine idling speed range	3000min ⁻¹ ±300
Lubrication	SAE 10W-30
Crankcase lubrication capacity	120ml
Fuel type	Unleaded gasoline
Fuel tank capacity	800ml
Blade cutting capacity	255mm
Guarantee sound power level	112dB(A)

Vibration level (K=1.5 m/s ²)	Left handle:6.536m/s ² Right handle:6.598m/s ²
Machine mass (without fuel)	11.8kg

INFORMATION:

The declared vibration and noise total value has been measured in accordance with a standard test method and may be used for comparing one tool and noise with another; The declared vibration and noise total value may also be used in a preliminary exposure assessment.

The vibration emission during actual use of the power tool can differ from the declared total value depending on the ways in which the tool is used; and it may be necessary to identify safety measures to protect the operator that are based on an estimation of exposure in the actual conditions of use (taking into account all parts of the operating cycle such as the times when the tool is switched off and when it is running idle in addition to the trigger time).

* All specifications are based on the latest product information available at the time of printing. We reserve the right to make changes at any time without notice.

ASSEMBLY

1. Unpack all parts and lay them on a flat, stable surface:
2. Remove all packing materials and shipping devices, if applicable.
3. The scope of delivery varies depending on the country and purchased variant: Model of GTBCPU4QL-H.
4. If you find that parts are missing or show damage do not use the product but contact your dealer. Using an incomplete or damaged product represents a hazard to people and property.
5. Ensure that you have all the accessories and tools needed for assembly and operation. This also includes suitable personal protective equipment.



WARNING:

Wear protective gloves for this assembly work and always lay the product on a flat and stable surface while assembling.

Follow the assembly instructions step-by-step and use the pictures provided as a visual guide to easily assemble the product!

INSTALLING THE CUTTING HEAD SHIELD

1. Put the shield component (2) on the shaft housing (Fig. 2).
2. Insert the screw (1) and tighten until the shield component (2) and the cutting head shield (3) are firmly in

place (Fig. 2).

INSTALLING THE CUTTING BLADE MODEL

1. Keep the mounting disc still and install the blade, washer, concave to be upwards, and the floating disc (Fig. 3).



NOTE:

The pit side of washer must be contacted with the blade.

2. Screw down the locknut and tighten it counter clockwise by holding the wrench (Fig. 3).
3. Remove the wrench and check for freedom of motion of the blade.

INSTALLING THE HANDLE

1. Put the handle on the shaft housing. Insert four screws and tighten until the handle is firmly in place (Fig. 4).
2. Handle position can be adjusted according to the user's need and preference.

INSTALL THE GRIP

1. Remove the coupler from the shaft housing.
2. Attach the throttle grip to the shaft housing and screw on tightly (Fig. 5).



NOTE:

The throttle control must be mounted facing down.

CONNECTING THE HOSE AND THE SHAFT HOUSING

1. Fix the hose coupler to the shaft housing and tighten screws.
2. Align the hose(end without positioning holes) with the shaft housing.Insert it to the end and lock the fixing screws (Fig. 6).
3. Ensure the hose is firmly fixed and does not fall off.



NOTE:

Rotate the hose slowly for easy assembly when it can't be inserted totally.



NOTE:

The hose should be placed horizontally after using. Frequent bending placement will cause deformation and affect normal use.

CONNECTING THE ENGINE AND THE SHAFT HOUSING

1. Settle down the units on a flat, level surface.
2. Pull up the button on the output base and connect the hose (end with a positioning hole) to the engine head. Aim at the axis for complete insertion (Fig. 7).
3. Check for well match between two parts in case the hose slips down.

OIL AND FUEL

USING THE RIGHT OIL

Use a high-quality SAE 10W-30 weight oil. DO NOT use dirty oil. Failure to use clean oil of the correct type can cause premature engine wear and failure.

ADDING OIL: INITIAL USE



WARNING:

Attempting to start the engine before it has been properly filled with lubricant will result in equipment failure not covered by the warranty. **OVERFILLING THE CRANKCASE MAY CAUSE SERIOUS PERSONAL INJURY.** Check the oil level before each use. The importance of maintaining the proper oil level cannot be overemphasized. Change the oil according to the Maintenance Schedule.

Do not overfill. Overfilling the crankcase may cause excessive smoke, oil loss, and engine damage.



NOTE:

This unit was shipped without oil in the crankcase. Oil must be added before starting the unit.

1. Set the unit on a flat, level surface.
2. Unscrew the oil fill plug (1) (Fig. 8).
3. Pour the entire container of oil into the oil fill hole (3) (Fig. 8). DO NOT overfill. Refer to Checking the Oil Level.



NOTE:

Never add oil to the fuel tank. This unit has a four-cycle engine. DO NOT mix oil with gasoline.

4. Wipe up any oil that may have spilled.
5. Reinstall the oil fill plug. Make sure the O-ring (2) is in place on the oil fill plug (Fig. 8).

USE THE RIGHT FUEL

The use of old fuel is the most common cause of performance problems. Use only fresh, clean unleaded gasoline.



NOTE:

This unit has a four-cycle engine. DO NOT mix oil with gasoline.

Definition of Blended Fuels

Today's fuels are often a blend of gasoline and oxygenates such as ethanol, methanol or MTBE (ether). Alcohol-blended fuel absorbs water. As little as 1% water in the fuel can make fuel and oil separate, forming acids when stored. ALWAYS use fresh fuel (less than 30 days old) with less than 10% ethanol.



NOTE:

Dispose of old fuel according to federal, state and local regulations.

Using Blended Fuels

If using a blended fuel:

- Always use fresh unleaded gasoline
- Use the fuel additive STA-BIL® or an equivalent

Using Fuel Additives

Use a fuel additive, such as STA-BIL Fuel Stabilizer or an equivalent, to inhibit corrosion and minimize gum deposits. Add 0.8 oz. (23 ml) of fuel additive per gallon of fuel, according to the instructions on the container. NEVER add fuel additives directly to the unit's fuel tank.

ADDING

FUEL



WARNING:

Remove the fuel cap slowly to avoid injury from fuel spray. Never operate the unit without the fuel cap securely in place.

Add fuel in a clean, well-ventilated outdoor area. Wipe up any spilled fuel immediately. Avoid creating a source of ignition for spilled fuel. Do not start the engine until fuel vapors dissipate.

Gasoline and its vapors are highly flammable and explosive. To prevent serious personal injury and property damage, handle it with care. Keep away from ignition sources and open flames, handle outdoors only.

Pour fuel outdoors where there are no sparks or flames. Slowly remove the fuel cap after stopping the engine. Do not smoke while fueling. Wipe spilled fuel from unit. Move at least 3 m (10 ft) away from the fueling source before starting engine.

Always wear heavy, long pants, boots, gloves, and a long-sleeve shirt. Do not wear loose clothing, jewelry, short pants, sandals, or go barefoot. Secure hair so it is above

shoulder level.

1. Position the unit with the fuel cap facing up.
2. Slowly remove the fuel cap.
3. Place the fuel container spout into the fuel tank fill hole and fill the tank. Stop adding gas when you see that the level reaches the base of the tank spout (Fig. 9).



NOTE:

Do not overfill the tank.

4. Wipe up any fuel that may have spilled.
5. Reinstall the fuel cap.
6. Move the unit at least 30 ft. (9.1 m) from the fuel container and the fueling site before starting the engine.

OPERATION



NOTE:

Ensure the oil and fuel added as required before starting. Refer to OIL AND FUEL.

SWITCH ON AND OFF



NOTE:

There is no need to turn the unit on. The On/Off switch (1) is in the On position at all times (Fig. 11).

1. Press the primer bulb (1) 5-10 times until it is filled up (Fig. 10).
2. Push the choke lever (2) up so that the choke is shut off (Fig. 10).
3. Pull the starter rope grip (1) quickly with a controlled and steady motion for 5 times till the sound of an engine deflagrating can be heard (Fig. 12).
4. Push the choke lever down make the choke reopen.
5. Pull the starter rope grip quickly until the engine starts.
6. To increase cutting speed, press and hold throttle lockout (2) and squeeze the throttle control (3). The further you squeeze the throttle control, the more the cutting speed will increase (Fig. 11).



NOTE:

To prevent the throttle control from being squeezed accidentally, this unit has a throttle lockout. The throttle control cannot be squeezed unless the throttle lockout is also engaged.

IF... the engine does not start, repeat with above steps.
IF... the engine stops while the throttle control is squeezed, repeat with above steps.

1. Release the throttle control (3) and allow the engine to idle (Fig. 11).

2. Press and hold the On/Off switch (1) in the Off (O) position until the engine and all attachments come to a complete stop (Fig. 11).



WARNING:

The tool runs for approximately 5 seconds after it has been switched off. Let the motor come to a complete stand still before setting the tool down.

CUTTING TIPS

- Check the area you wish to cut and remove any objects that may be thrown up by the blade.
- Check the safety equipment on the device before the start of work.
- Start the engine.
- Wear the device as prescribed and hold with your right hand on the operating handle
- Adjust the speed manually to meet their requirement by throttle control (3) according to cutting objects (Fig. 11).
- Use the Cruise Control function (4) if operator wants to cut at a stable speed (Fig. 11).
- Gently push down fully on the fuel lever. Always cut at full speed!

TIPS FOR BEST RESULTS

- To direct clippings away from the operator, tilt the cutting head slightly down to the right; Whenever possible swing the trimmer in a left to right cutting motion.
- Do not trim wet grass or weeds.

Some blade breakages will occur from:

- Entanglement with foreign matter
- Normal blade fatigue
- Attempting to cut thick vegetation
- Forcing the blade into objects such as walls or fence posts

MAINTENANCE



WARNING:

To avoid serious personal injury, always stop the engine and allow it to cool before cleaning or maintaining the unit. Never perform cleaning or maintenance while the unit is running. Disconnect the spark plug wire to prevent the unit from starting accidentally.

CLEANING

1. Clean the product with a dry cloth. Use a brush for areas that are hard to reach.

2. In particular clean the chuck, switches and air vents after every use with a cloth and brush.
3. Remove stubborn dirt with high pressure air (max. 3 bar).
4. Check for worn or damaged parts. Replace worn parts as necessary or contact an authorised service centre for repair before using the product again.



NOTE:

Do not use chemical, alkaline, abrasive or other aggressive detergents or disinfectants to clean this product as they might be harmful to its surfaces.

MAINTENANCE

Your power tool requires no additional lubrication or maintenance.

There are no user serviceable parts in your power tool. Before and after each use, check the product and accessories (or attachments) for wear and damage. If required, exchange them for new ones as described in this instruction manual.

MAINTENANCE SCHEDULE



WARNING:

When the engine idles, user should check the cutting attachment stops turning routinely. To prevent any danger or defects, user should check and maintain every part of the machine before use and after dropping or other impacts. Perform these required maintenance procedures at the frequency stated in the table. These procedures should also be a part of any seasonal tune-up.



NOTE:

Some maintenance procedures may require special tools or skills. If you are unsure about these procedures, take the unit to a qualified service dealer.



NOTE:

Maintenance, replacement, or repair of the emission control devices and system may be performed by a qualified service dealer.



NOTE:

Please read the California/EPA statement that came with the unit for a complete listing of terms and coverage for the emissions control devices, such as the spark arrestor, muffler, carburetor, etc.

FREQUENCY	MAINTENANCE REQUIRED
Every 10 hours	<ul style="list-style-type: none"> • Clean the air filter. • Refer to Maintaining the Air Filter.
Every 8 hours and before first 8 hours	<ul style="list-style-type: none"> • Change the oil. Refer to Changing the Oil.
After the first 10 hours and at 38 hours	<ul style="list-style-type: none"> • Have the rocker arm clearance checked by a qualified service dealer. • Check the spark plug condition and gap. Refer to Maintaining the Spark Plug.

CHECKING THE OIL LEVEL



WARNING:

Check the oil level before each use. The importance of maintaining the proper oil level cannot be overemphasized.

Inspecting the Oil Level

1. Stop the engine and allow it to cool.
2. Set the unit on a flat, level surface, such as a workbench or table. The cutting head shield should hang over the edge so that the engine is level.



NOTE:

Failure to keep the engine level may result in a faulty oil level reading.

3. Unscrew the oil fill plug. The oil level should be visible on the first thread of the oil reservoir. If the oil level is too low, add oil. Refer to Adding Oil.

Adding Oil

1. Clean the area around the oil fill plug to prevent debris from entering the oil fill hole.
2. Unscrew the oil fill plug.
3. Add oil to the oil fill hole until the oil level is visible on the first thread of the oil reservoir.



WARNING:

DO NOT overfill the oil level. Overfilling will result in too much oil in the engine crankcase, and may cause smoke or fumes that can injure the user.

- If the oil level is too high, tip the unit and drain the excess oil into an appropriate container.
4. Wipe up any oil that may have spilled.
 5. Make sure the O-ring is in place on the oil fill plug.
 6. Reinstall the oil fill plug.

CHANGING THE OIL



WARNING:

Old engine oil is considered special waste and has to be disposed according to your local environment protection regulation. Do not pour the oil into a garbage can, sewer, soil etc. Change the oil while the engine is still warm. The oil will flow freely and carry away more impurities.

1. Clean the area around the oil fill plug to prevent debris from entering the oil fill hole.
2. Unscrew the oil fill plug.
3. Tip the unit vertically to pour the oil out of the oil fill hole and into a container. Allow ample time for complete drainage (Fig. 14).



NOTE:

Dispose of the old oil according to federal, state and local regulations.

4. Wipe up any oil that may have spilled.
5. Pour 120 ml of SAE 10W-30 oil into the oil fill hole.
6. Wipe up any oil that may have spilled.
7. Make sure the O-ring is in place on the oil fill plug.
8. Reinstall the oil fill plug.

MAINTAINING THE AIR FILTER

Failure to maintain the air filter can result in poor performance or can cause permanent damage to the engine. Engine failure due to improper air filter maintenance is not covered by the product warranty.

Cleaning the Air Filter

1. Unscrew the cover screw (3) completely. Remove the air filter cover (2) from the air filter housing (Fig. 13).
2. Remove the air filter (4) from the air filter housing(1) (Fig. 13).
3. Wash the air filter in detergent and water. Rinse the air filter thoroughly and allow it to dry.
4. Reinstall the air filter in the air filter housing.



NOTE:

Operating the unit without the air filter and air filter cover will VOID the warranty.

5. Insert the tab on the air filter cover into the hole in the air filter housing. Push the air filter cover back onto the air filter housing. Insert the cover screw into the air filter cover. Tighten the cover screw to secure the air filter cover (Fig. 13).



NOTE:

Do not overtighten as this may strip the screw.

ADJUSTING THE IDLE SPEED



WARNING:

The cutting head will move when adjusting the idle speed. Wear all protective clothing and keep all bystanders, children, and pets at least 50 ft. away. Make adjustments with the unit supported by hand so that the cutting head does not contact the ground or any object.

Keep all parts of your body away from the cutting head and muffler. Failure to follow these instructions could result in serious personal injury.

If the engine will not idle properly:

1. Start the engine. Refer to Starting and Stopping.
2. Release the throttle control and let the engine idle.
 - If the engine stops, increase the idle speed. Use a small Phillips screwdriver to turn the idle speed screw clockwise, 1/8 of a turn at a time, until the engine idles smoothly.
 - If the cutting head spins when the engine idles, reduce the idle speed. Turn the idle speed screw counterclockwise, 1/8 of a turn at a time, until the cutting head stops moving.



WARNING:

The cutting attachment should never turn at idle. Turn the idle speed screw counterclockwise to reduce the idle RPM and stop the cutting attachment, or contact customer support for adjustment and discontinue use until the repair is made. Serious personal injury could result from the cutting attachment turning at idle.

MAINTAINING THE SPARK PLUG

1. Stop the engine and allow it to cool. Grasp the spark plug boot firmly and pull it from the spark plug.
2. Clean around the spark plug. Remove the spark plug from the cylinder head with a 5/8-inch socket, turning counterclockwise.



NOTE:

A 5/8-inch spark plug wrench is supplied with this trimmer.

3. Inspect the spark plug. If the spark plug is cracked, fouled or dirty, replace it with replacement part #AM5C or an equivalent spark plug.
4. Use a feeler gauge to set the air gap at 0.6 mm - 0.8 mm (0.025 in. - 0.31 in.) (Fig. 15).
5. Install the spark plug in the cylinder head. Tighten the spark plug with a 5/8-inch socket, turning it clockwise until snug.



NOTE:

If using a torque wrench, torque to 18 N•m (159 in.·lb.). Do not over tighten.

6. Reattach the spark plug boot.

TRANSPORT

Transport the unit in a horizontal position. If not possible, transport the unit vertically with the engine at the top. Secure the machine during transport to prevent loss of fuel, damage or injury.



NOTE:

Use of a transport cover for metal blades during the transport.

STORAGE

- Never store a fueled unit where fumes may reach an open flame or spark.
- Allow the engine to cool before storing.
- Lock up the unit to prevent unauthorized use or damage.
- Store the unit in a dry, well-ventilated area.
- Store the unit out of the reach of children.

Short-term Storage (1-2 weeks)

Store the unit in a horizontal position. If not possible, store the unit vertically with the engine at the top.

Long-term Storage

1. Remove the fuel cap, tip the unit and drain the fuel into an approved container. Reinstall the fuel cap.
2. Start the engine and allow it to run until it stalls. This ensures that all fuel has been drained from the carburetor.
3. Allow the engine to cool. Remove the spark plug and put 5 drops of any high quality motor oil into the cylinder. Pull the starter rope slowly to distribute the oil. Reinstall the spark plug.
4. Thoroughly clean the unit and inspect it for any loose or damaged parts. Repair or replace damaged parts and tighten loose screws, nuts or bolts.
5. Store the unit in a horizontal position. If horizontal storage

is not possible, store unit vertically with engine at top.

Preparing the Unit for Use after Long-term Storage

1. Remove the spark plug. Tip the unit and drain all of the oil from the cylinder into an approved container. Reinstall the spark plug.

2. Change the oil. Refer to Changing the Oil.



NOTE:

Do not use fuel that has been stored for more than 30 days. Dispose of old fuel and oil according to federal, state and local regulations.

TROUBLESHOOTING

Suspected malfunctions are often due to causes that the users can fix themselves. Therefore, check the product using this section. In most cases the problem can be solved quickly.

PROBLEM	POSSIBLE CAUSE	SOLUTION
THE ENGINE WILL NOT START	The fuel tank is empty	Fill the fuel tank with fresh fuel
	The primer bulb was not pressed enough	Press the primer bulb 10 times
	The fuel is old (over 30 days)	Drain the fuel tank and add fresh fuel
	The spark plug is fouled	Replace the spark plug
THE ENGINE WILL NOT IDLE	The air filter is dirty	Clean or replace the air filter
	The fuel is old (over 30 days)	Drain the fuel tank and add fresh fuel

THE ENGINE WILL NOT ACCELERATE	The fuel is old (over 30 days)	Drain the fuel tank and add fresh fuel
	The cutting head is bound with grass	Stop the engine and clean the cutting head
	The air filter is dirty	Clean or replace the air filter
THE ENGINE LACKS POWER OR STALLS	The fuel is old (over 30 days)	Drain the fuel tank and add fresh fuel
	The air filter is dirty	Clean or replace the air filter
	The spark plug is fouled	Replace the spark plug

