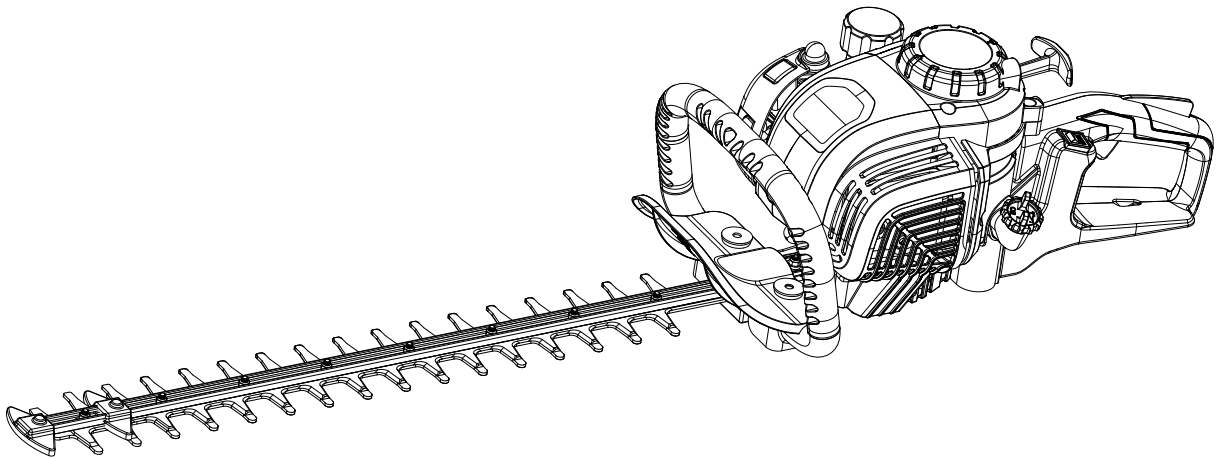




4-Cycle 26.5cc Engine Gasoline Powered Hedge Trimmer

Operator's manual
Model: HT4QL-M1-EU
HT4QL-M-EU



• SAFETY & INTERNATIONAL SYMBOLS •

This operator's manual describes safety and international symbols and pictographs that may appear on this product. Read the operator's manual for complete safety, assembly, operating and maintenance and repair information.



Caution / Warning.



DANGER!
Risk of electrocution!



WARNING - To reduce the risk of injury, user must read instruction manual.



Thrown objects can ricochet and result in personal injury or property damage.



Wear ear protection.



Keep all bystanders at least 50 ft. away.



Wear eye protection.



Indicates danger, warning or caution. Precautions that involve your safety.



Failure to keep your hands away from the blade will result in serious personal injury.



DO NOT USE E85 FUEL IN THIS UNIT
CAUTION: It has been proven that fuel containing greater than 10% ethanol will likely damage this engine and void the warranty.



Avoid power lines, use in dry conditions



Always use clean, fresh unleaded fuel. Refer to operator's manual for the proper type of oil.



Do not expose to rain.



Hot surface. Do not touch a hot muffler or cylinder. You may get burned. These parts get extremely hot from operation. They remain hot for a short time after the unit is turned off.



The product complies with the applicable European directives and an evaluation method of conformity for these directives was done.



Guaranteed sound power level: 103dB (A)

TABLE OF CONTENTS

SAFETY.....	3
KNOW YOUR UNIT.....	9
SPECIFICATIONS*.....	10
UNPACKING.....	11
OPERATION.....	12
MAINTENANCE.....	16
TROUBLESHOOTING.....	19
PARTS.....	22
PARTS LIST.....	23
EC DECLARATION OF CONFORMITY.....	24

SAFETY

THIS MACHINE CAN CAUSE SERIOUS INJURIES. Read the instructions carefully for the correct handling, preparation, maintenance, starting and stopping of the machine. Be familiar with all controls and the proper use of the machine;



DANGER:

Signals an EXTREME hazard. Failure to obey a safety **DANGER** symbol **WILL** result in serious injury or death to yourself or to others.



WARNING:

Crude oil, gasoline, diesel fuel and other petroleum products can expose you to chemicals including toluene and benzene, which are known to the State of California to cause cancer and birth defects or other reproductive harm. These exposures can occur in and around oil fields, refineries, chemical plants, transport and storage operations such as pipelines, marine terminals, tank trucks and other facilities and equipment. For more information go to: www.P65Warnings.ca.gov/petroleum.



WARNING:

Signals a SERIOUS hazard. Failure to obey a safety **WARNING** symbol **CAN** result in serious injury to yourself or to others.



CAUTION:

Signals a MODERATE hazard. Failure to obey a safety **CAUTION** symbol **MAY** result in property damage or injury to yourself or to others.

NOTE: Advises you of information or instructions vital to the operation or maintenance of the equipment.



WARNING:

CALIFORNIA PROPOSITION 65

This product contains a chemical known to the state of California to cause cancer, birth defects or other reproductive harm.

Read the operator's manual and follow all warnings and safety instructions. Failure to do so can result in serious injury to the operator and/or bystanders.

SAFE OPERATING PRACTICES

IMPORTANT

**READ CAREFULLY BEFORE USE
KEEP FOR FUTURE REFERENCE**

TRAINING

Become familiar with the instructions before attempting to operate the equipment.

PREPARATION

- THIS HEDGE TRIMMER CAN CAUSE SERIOUS INJURIES.** Read the instructions carefully for the correct handling, preparation, maintenance,

starting and stopping of the hedge trimmer. Become familiar with all controls and the proper use of the hedge trimmer.

- b) Never allow children to use the hedge trimmer.
- c) Beware of overhead power lines.
- d) Avoid operating while people, especially children, are nearby.
- e) Dress properly! Do not wear loose clothing or jewellery, which can be caught in moving parts. Use of sturdy gloves, non-skid footwear and safety glasses is recommended.
- f) Use extra care when handling fuels. Fuel is flammable and the vapours are explosive. The following points should be observed.
 - 1) Use only an approved container.
 - 2) Never remove the fuel cap or add fuel with the power source running. Allow engine and exhaust components to cool down before refuelling.
 - 3) Do not smoke.
 - 4) Never refuel indoors.
 - 5) Never store the hedge trimmer or fuel container inside where there is an open flame, such as near a water heater.
 - 6) If fuel is spilled, do not attempt to start the power source, but move the hedge trimmer away from the spillage before starting.
 - 7) Always replace and securely tighten the fuel cap after refuelling.
 - 8) If the fuel tank is drained, this should be done outdoors.
- g) If the cutting mechanism strikes any foreign object or the hedge trimmer starts making any unusual noise or vibration, shut off the power source and allow the hedge trimmer to stop. Disconnect the spark plug wire from the spark plug and take the following steps.
 - 1) Inspect for damage.
 - 2) Check for, and tighten, any loose parts.
 - 3) Have any damaged parts replaced or repaired with parts having equivalent specifications.
- h) Warn of the need for ear protection.
- i) Warn of the need for eye protection.
- j) Instruct in how to stop the hedge trimmer in an emergency.

OPERATION

- a) Stop the engine before:
 - 1) Cleaning or when clearing a blockage;
 - 2) Checking, carrying out maintenance or working on the hedge trimmer;
 - 3) Adjusting the working position of the cutting. Ensure that the hedge trimmer is correctly located in a designated working position before starting the engine.
- 4) Leaving the hedge trimmer unattended.
- c) While operating the hedge trimmer, always ensure that the operating position is safe and secure, especially when using steps or a ladder.
- d) Do not operate the hedge trimmer with a damaged or excessively worn cutting device.
- e) To reduce fire hazards, keep the engine and silencer free of debris, leaves and excessive lubricant.
- f) Always ensure that all handles and guards are fitted when using the hedge trimmer. Never attempt to use an incomplete hedge trimmer or one fitted with an unauthorized modification.
- g) Always use two hands to operate a hedge trimmer.
- h) Always be aware of your surroundings and stay alert for possible hazards of which you might not be aware due to the noise of the hedge trimmer.

MAINTENANCE AND STORAGE

- a) When the hedge trimmer is stopped for servicing, inspection or storage, shut off the power source, make sure all moving parts have come to a stop and disconnect the spark plug wire from the spark plug. Allow the hedge trimmer to cool before making any inspections, adjustments, etc.
- b) Store the hedge trimmer where the fuel vapour will not reach an open flame or spark. Always allow the hedge trimmer to cool down before storing.
- c) When transporting or storing the hedge trimmer, always fit the cutting device transport guard.

RESIDUAL RISKS

WARNING:

Even when the unit is used as prescribed it is not possible to eliminate all residual risk factors. The following hazards may arise in connection with the unit's construction and design:

- Damage to lungs if an effective dust mask is not worn.
- Damage to hearing if effective hearing protection is not worn.
- Health defects resulting from vibration emission if the unit is being used over long periods of time or not adequately managed and properly maintained.

WARNING:

This unit produces an electromagnetic field during operation. This field may, under some circumstances, interfere with active or passive medical implants. To reduce the risk of serious or fatal injury, we recommend persons with medical implants to consult their physician and the medical implant manufacturer before operating this unit.

WARNING:

Inspect unit before each use. Replace damaged parts. Check for fuel leaks. Make sure all fasteners are in place and secure. Replace parts that are cracked, chipped, or damaged in any way. Make sure the cutting attachment is properly installed and securely fastened.

WARNING:

Do not operate the unit inside a closed environment, such as a room or building; breathing carbon monoxide from exhaust fumes can kill.

WARNING:

Pour fuel outdoors where there are no

sparks and flames. Slowly remove the fuel cap only after stopping the engine. Do not smoke while fueling or mixing fuel. Wipe spilled fuel from the unit. Move at least 3 m (10 ft) away from the fueling source and site before starting engine.

Read and understand all instructions. Failure to follow all instructions listed below may result in electric shock, fire and/or serious personal injury

SPECIFIC RULES FOR HEDGE TRIMMERS

WARNING:

Do not operate near electrical power lines. The unit has not been designed to provide protection from electric shock in the event of contact with overhead electric lines. Consult local regulations for safe distances from overhead electric power lines and ensure that the operating position is safe and secure before operating the unit.

WARNING:

If you use this tool incorrectly, you can suffer serious personal injury!

- Keep all parts of the body away from the cutting blades when in operation. Before you start the hedge trimmer, make sure the cutting blades are not contacting anything.
- Always hold the tool firmly with two hands. Always hold the hedge trimmer with your right hand on the rear handle and your left hand on the front handle. Holding the hedge trimmer (left hand on rear handle, right hand on front handle) may affect the balance of the trimmer and will increase the risk of injury.
- Do not remove cut material or hold material to be cut when blades are moving. Make sure the switch is off when clearing jammed material. Blades coast after turn off.
- Only hold the tool by the insulated

gripping surfaces to avoid electric shock in case the cutting blades contact hidden wiring. Cutting blades contacting a live wire may make exposed metal parts of the power tool live and can give the operator an electric shock.

- Keep the cutting blades away from any cords or extension cables. Check for foreign objects in the hedges such as wire fences before operation.
- Only operate the hedge trimmer from a firm, level surface fixed on the ground. Always keep proper footing during operation. Slippery or unstable surfaces such as ladders may cause a loss of balance or control.
- Carry the hedge trimmer by the handle with the cutter blades stopped. Always protect the blades with a scabbard (blade cover) when transporting or storing the hedge trimmer. Carefully handling the hedge trimmer greatly reduces the risk of accidentally touching the sharp cutting blades.
- Always wait until the cutting blades have come to a complete stop before removing the battery.
- Keep the handles dry, clean and free from gas, oil and grease. Slippery handles may lead to a loss of control. Never attempt to use an incomplete or altered tool.
- This tool is not intended for use by persons (including children) with reduced physical, sensory or mental capabilities, or lack of experience and knowledge, unless they have been given supervision or instruction concerning use of the appliance by a person responsible for their safety. Children should be supervised to ensure that they do not play with the appliance.
- Follow the instructions for lubrication and blade sharpening.
- Young persons under the age of 16 are not permitted to operate this device.
- Inspect the hedge trimmer thoroughly before use for damage. If any parts

or pieces appear to be missing or damaged, do not operate the hedge trimmer.

- Do not operate during adverse weather conditions, particularly during lightning and rain.
- Only use properly functioning hedge trimmers. Only work with the cutting blades sharpened according to regulations.
- Use this tool only for the purposes for which it was designed.

ADDITIONAL SAFETY WARNINGS FOR OPERATION

Stop the engine mains before:

- Cleaning or when clearing a blockage;
- Checking, maintenance or working on the machine;
- When adjusting the working position of the cutting device.
- Always disconnect the spark plug wire before assembling, adjusting or cleaning, and before leaving the machine unattended for any period.
- It is recommended that the unexperienced user should have practical instruction in the use of the unit and the protective equipment from an experienced operator.
- Children and juveniles, with the exception of apprentices older than 16 years and under supervision, may not operate the product. The same applies for persons who do not or do not sufficiently know how to handle the product.
- The operating instructions should always be at hand. Persons unfit or tired must not operate the tool.
- Wait until the chain has come to a standstill completely before placing it down.
- Any servicing should be performed by an authorized service representative.
- When transporting or storing the machine always fit the cutting device guard;

- Instructions for correct use and an indication that the machine should not be used for any other purpose;
- Know how to stop the machine quickly in an emergency;

CONCERNING THE USE OF FUELS

Fuels are inflammable and explosive. Reduce the risk of explosion and fire as follows:

- Handle fuel with care; it is highly flammable. Never add fuel to a machine with a running or hot engine. Do not inhale fuel fumes as they are toxic;
- To reduce fire hazard keep engine and silencer free of debris, leaves, or excessive lubricant;
- Turn off and cool the motor down before filling the tank with fuel.
- Refrain from smoking and starting open fires when handling fuels.
- Store and mix fuels in approved and correspondingly labelled canisters.
- Store fuels in closed containers. Keep in mind that fuels may also evaporate at room temperature and collect on the floor of closed rooms (risk of explosion).
- Do not open the tank lid or refill with petrol when the motor is running or even when it is hot.
- If petrol is spilled, do not attempt to start the motor.
- Start the machine at least nine metres away from the fuelling location.
- If you need to empty the tank, do so out in the open.

Fuels are toxic! They contain substances that have an immediate toxic effect and may also cause permanent damage to your health. Take all precautionary measures to prevent your body from absorbing any of these substances:

- Tank and siphon fuels only outdoors or in wellventilated rooms.
- Do not inhale fuel fumes.
- Avoid contact with eyes and skin. If contact occurs, thoroughly rinse with

water. If contact with eyes occurs, seek immediate medical attention.

- Wear gloves when transferring fuel.
- When fuel has come into contact with your clothes, change them immediately. Clean your clothes before putting them back on.
- Store fuels out of the reach of children. When handled inappropriately, fuels may cause damage to the environment:
- Use caution when siphoning fuels. Fuel must never seep into the ground or the sewage system.
- Dispose of any remaining fuel in an appropriate manner. Never dispose of fuel with regular household waste.
- Fuels may be stored only for a limited time. Never buy more fuel than you plan on consuming within the next few months.

MAINTENANCE

- Before conducting any maintenance on the device, always turn off the motor and pull the ignition cable plug.
- Check the fuel system regularly for leaks or defective parts.
- Only those maintenance and fault elimination tasks described here may be carried out. Any other tasks must be completed by a specialist.
- Only use original replacement parts. Only these replacement parts are designed and suitable for the device. Other replacement parts will not only lead to an invalidation of the warranty, they may also endanger you and your environment. Device-specific safety instructions.

REPLACEMENT PART LIST

Item	Model	Regular service period
Air filter	299999000360	Before each use
Throttle lever	202004000892	Before each use
Blade	201045000188	Before each use
Spark plug	199999001291	Every year or 100 hours
Carburetor	199064000058	Every year or 200 hours

INTENDED USE

This engine gasoline powered hedge trimmer is only intended to be used for cutting hedges, bushes and shrubs in domestic gardens. Do not use it for others purposes. The maximum cutting capacity must be observed. Do not cut branches exceeding the stated maximum capacity.

RESIDUAL RISKS

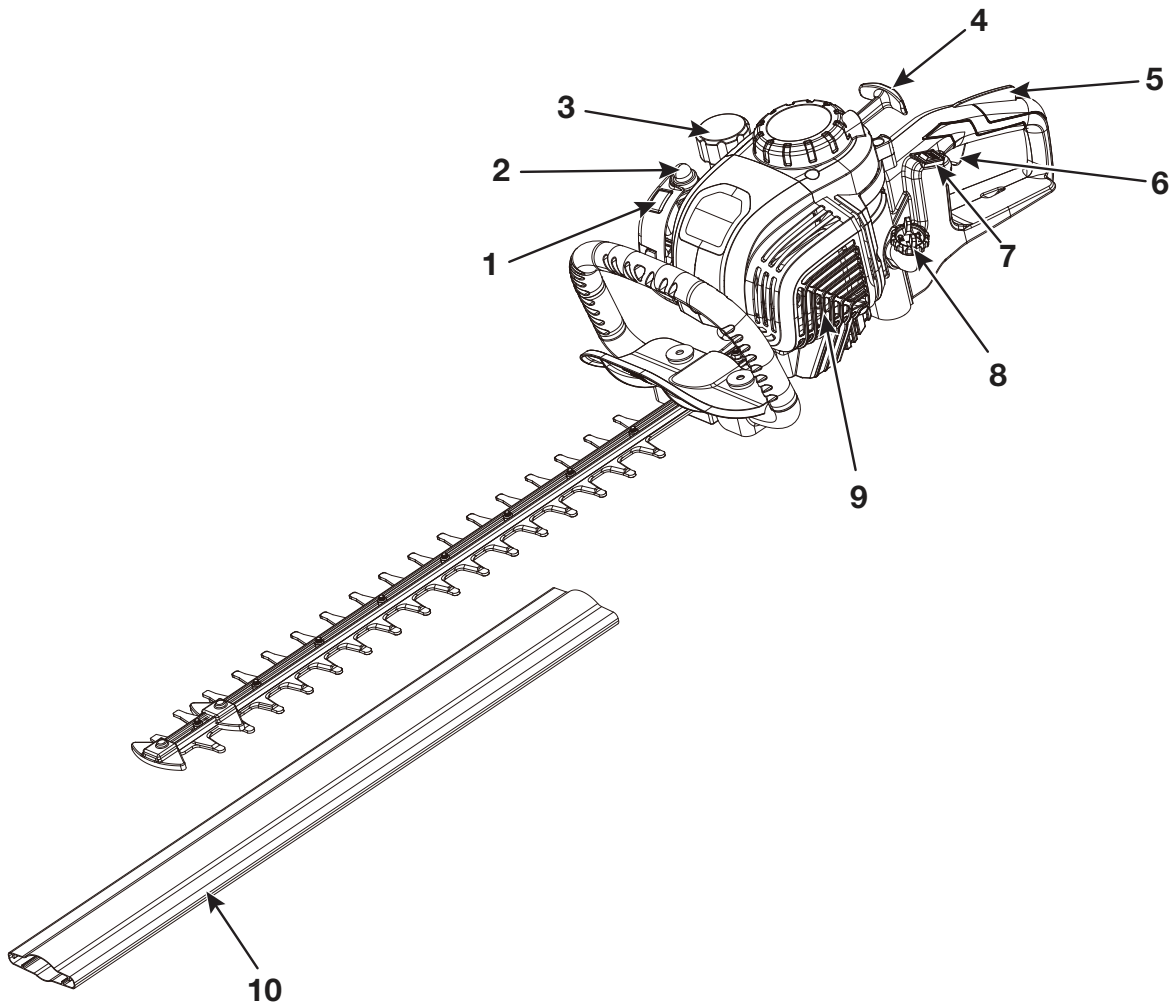
Even if you are operating this product in accordance with all the safety requirements, potential risks of injury and damage remain. The following dangers can arise in connection with the structure and design of this product:

- Health defects resulting from vibration emission if the product is being used over long periods of time or not adequately managed and properly maintained.
- Injuries and damage to property due to broken accessories or the sudden impact of hidden objects during use.
- Danger of injury and property damage caused by flying objects.

KNOW YOUR UNIT

MODEL : HT4QL-M-EU APPLICATIONS

Cutting and trimming of hedges, bushes and shrubs in domestic gardens.



1	Choke Button	6	Throttle
2	Primer Bulb	7	On/Off Switch
3	Fuel Tank Cap	8	Oil Tank Cap
4	Starter Grip	9	Muffler
5	Throttle Lockout	10	Protective Cover

SPECIFICATIONS*

Model	HT4QL-M-EU	HT4QL-M1-EU
Engine type	Air-Cooled,4-Cycle	Air-Cooled,4-Cycle
Displacement	26.5cc	26.5cc
Spark plug gap	0.6-0.8mm	0.6-0.8mm
Rated input power	650W	650W
No-Load speed	7000/min	7000/min
Lubrication	SAE 10W-30	SAE 10W-30
Crankcase lubrication capacity	60ml	60ml
Fuel type	Unleaded gasoline	Unleaded gasoline
Fuel tank capacity	280ml	280ml
Cutting blade length	480mm	550mm
Cutting capacity	28mm	28mm
Sound pressure level(EN ISO 10517)	$L_{PA}=87$ d(B)A $K_{PA}=3.0$ d(B)A	$L_{PA}=87$ d(B)A $K_{PA}=3.0$ d(B)A
Measured sound power level (EN ISO 10517)	$L_{WA}=100.2$ d(B)A $K_{WA}=3.0$ d(B)A	$L_{WA}=100.2$ d(B)A $K_{WA}=3.0$ d(B)A
Guarantee sound power level (EN ISO 10517)	103 d(B)A	103 d(B)A
Vibration level($K=1.5$ m/s ²) (EN ISO 10517)	4.14m/s ² (front handle) 8.33m/s ² (rear handle)	4.14m/s ² (front handle) 8.33m/s ² (rear handle)
Weight (fully assembled,without fuel or oil)	4.9kg	5.0kg

Information:

The declared vibration and noise total value has been measured in accordance with a standard test method and may be used for comparing one tool with another;

The declared vibration and noise total value may also be used in a preliminary exposure assessment.

The vibration and noise emission during actual use of the power tool can differ from the declared total value depending on the ways in which the tool is used; and it may be necessary to identify safety measures to protect the operator that are based on an estimation of exposure in the actual conditions of use (taking into account all parts of the operating cycle such as the times when the tool is switched off and when it is running idle in addition to the trigger time).

* All specifications are based on the latest product information available at the time of printing. We reserve the right to make changes at any time without notice.

UNPACKING

Carefully remove the product and any accessories from the box. Make sure that all items listed in the packing list are included. Inspect the product carefully to make sure no breakage or damage occurred during shipping. Do not discard the packing material until you have carefully inspected and satisfactorily operated the product. If any parts are damaged or missing, please call 49 (0)40 854 10 40 - 14 for assistance.

WARNING:

Do not use this product if any parts on the packing list are already assembled to your product when you unpack it. Parts on this list are not assembled to the product by the manufacturer and require customer installation. Use of a product that may have been improperly assembled could result in serious personal injury.

INCLUDED PARTS

Quantity	Item
1	Operator's manual
1	Cutting blade protective cover
1	Spark plug wrench
1	Internal hexagonal wrench
1	60ml Empty Oil Bottle

WARNING:

To prevent an accidental start that could cause serious personal injury, always disconnect the engine spark plug wire from the spark plug when assembling parts.

WARNING:

Never install, remove, or adjust any attachments while power head is running. Failure to stop the engine can cause serious personal injury.

WARNING:

Do not allow familiarity with this product to make you careless. Remember that a careless fraction of a second is sufficient to inflict serious injury.

WARNING:

Always wear eye protection with side shields marked to comply with ANSI Z87.1, along with hearing protection. Failure to do so could result in objects being thrown into your eyes and other possible serious injuries.

UNPACKING

WARNING:

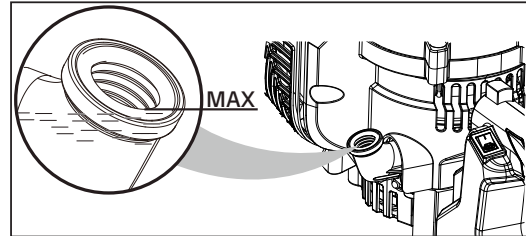
If any part of the unit is missing or damaged, do not operate the unit until the damaged part is repaired or replaced.

DO NOT discard box or packing material until all parts are examined.

ADDING/CHECKING ENGINE OIL

CAUTION:

Attempting to start the engine before it has been properly filled with lubricant will result in equipment failure not covered by the warranty.



Engine lubricant has a major influence on engine performance and service life. **This engine is shipped without engine lubricant.**

Always use a 4-cycle engine lubricant that meets or exceeds the requirements for API service classification SJ. SAE 30, 10W30, or 10W40 are all acceptable lubricants to use in this product. Non-detergent or 2-stroke engine lubricants will damage the engine and should not be used. Check lubricant level before each use.

ADD ENGINE OIL: INITIAL USE

1. Unscrew the oil cap from the engine and remove.
2. Pour 60 ml of oil into the oil fill hole. Replace and tighten the oil cap.

CHECK ENGINE OIL: BEFORE EACH USE

1. Set unit on a flat level surface.
2. Unscrew the oil cap and remove.
3. Lubricant level should fall within the top of the oil fill hole (the top of screw thread).
4. If level is low, add engine lubricant until the fluid level rises to the top of oil fill hole (the top of screw thread).

NOTE: Do not overfill.

5. Replace and tighten the oil cap.

CAUTION:

Do not overfill. Overfilling the crankcase may cause excessive smoke, oil loss, and engine damage.

WARNING:

Operation of this equipment could create sparks that can start fires around dry vegetation. A spark arrester may be required. The operator should contact local fire agencies for laws or regulations relating to fire prevention requirements.

OPERATION

! WARNING:

Do not use any attachments or accessories not recommended by the manufacturer of this product. The use of attachments or accessories not recommended can result in serious personal injury.

FUELING THE UNIT

! WARNING:

Gasoline is extremely flammable. Ignited vapors may explode. Always stop the engine and allow it to cool before filling the fuel tank. Do not smoke while filling the tank. Keep sparks and open flames at a distance from the area.

! WARNING:

Remove the fuel cap slowly to avoid injury from fuel spray. Never operate the unit without the fuel cap securely in place.

! WARNING:

Add fuel in a clean, well-ventilated outdoor area. Wipe up any spilled fuel immediately. Avoid creating a source of ignition for spilled fuel. Do not start the engine until fuel vapors dissipate.

! WARNING:

Gasoline and its vapors are highly flammable and explosive. To prevent serious personal injury and property damage, handle it with care. Keep away from ignition sources and open flames, handle outdoors only. Pour fuel outdoors where there are no sparks or flames. Slowly remove the fuel cap after stopping the engine. Do not smoke while fueling. Wipe spilled fuel from unit. Move at least 3 m (10 ft) away from the fueling source before starting engine.

! WARNING:

Always wear heavy, long pants, boots, gloves, and a long-sleeve shirt. Do not wear loose clothing, jewelry, short pants, sandals, or go barefoot. Secure hair so it is above shoulder level.

USING THE RIGHT FUEL

The use of old fuel is the most common cause of performance problems. Use only fresh, clean unleaded gasoline.

This unit has a four-cycle engine. **DO NOT** mix oil with gasoline.

Definition of Blended Fuels

Today's fuels are often a blend of gasoline and oxygenates such as ethanol, methanol or MTBE (ether). Alcohol-blended fuel absorbs water. As little as 1% water in the fuel can make fuel and oil separate, forming acids when stored. **ALWAYS** use fresh fuel (less than 30 days old) with less than 10% ethanol. Dispose of old fuel according to federal, state and local regulations.

Using Blended Fuels

If using a blended fuel:

Always use fresh unleaded gasoline

Use the fuel additive STA-BIL® or an equivalent

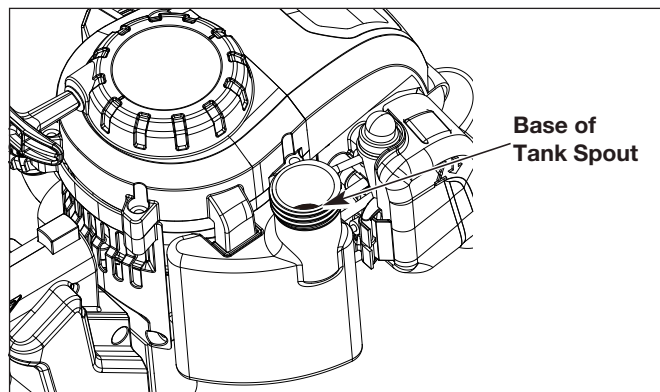
! WARNING:

DO NOT USE E85 FUEL IN THIS UNIT. It has been proven that fuel containing greater than 10% ethanol will likely damage this engine and void the warranty.

USING FUEL ADDITIVES

Use a fuel additive, such as STA-BIL Fuel Stabilizer or an equivalent, to inhibit corrosion and minimize gum deposits. Add 0.8 oz. (23 ml) of fuel additive per gallon of fuel, according to the instructions on the container. **NEVER** add fuel additives directly to the unit's fuel tank.

1. Remove the fuel tank cap by turning counterclockwise. Rest the cap on a clean surface.
2. Carefully pour fuel into the tank until fuel reaches the base of the tank spout. Avoid spillage.



3. Immediately replace fuel cap and hand tighten by turning it clockwise. Wipe up any spilled fuel.

NOTE: Visually inspect to see if fuel level is low. If fuel is low, refill with unleaded fuel carefully without overfilling and tighten the fuel tank cap immediately.

- This unit has a 4-cycle engine. Do not mix oil with gasoline.
- The use of old fuel is the most common cause of performance problems. Use only fresh, clean unleaded gasoline (less than 30 days old). Dispose of old fuel according to federal, state and local regulations.
- Drain the tank and run the engine dry before storing the unit.
- Do not use E15 or E85 fuel (or fuel containing greater than 10% ethanol) in this product. It will damage the unit and void the warranty.

! WARNING:

Engine housing can become hot during operation. Do not rest or place your arm, hand, or any body part against the engine housing. Extended contact with the engine housing can result in burns or other injuries.

WARNING:

Always position the unit on the operator's right side. The use of the unit on the operator's left side will expose the user to hot surfaces and can result in possible burn injury. To avoid burns from hot surfaces, never operate unit with the bottom of the engine above waist level.

WARNING:

Do not allow familiarity with this product to make you careless. Remember that a careless fraction of a second is sufficient to inflict serious injury.

WARNING:

Always wear eye protection with side shields marked to comply with ANSI Z87.1, along with hearing protection. Failure to do so could result in objects being thrown into your eyes and other possible serious injuries.

WARNING:

Do not use any attachments or accessories not recommended by the manufacturer of this product. The use of attachments or accessories not recommended can result in serious personal injury.

WARNING:

Operation of this equipment could create sparks that can start fires around dry vegetation. A spark arrester may be required. The operator should contact local fire agencies for laws or regulations relating to fire prevention requirements.

WARNING:

Operate this unit only in a well-ventilated outdoor area. Carbon monoxide exhaust fumes can be lethal in a confined area.

WARNING:

Avoid accidentally starting the unit. To avoid serious injury, the operator and the unit must be in a stable position when pulling the starter rope.

CAUTION:

Do not overwork yourself. Take regular breaks and change working position to ensure you can concentrate on the work and have full control over the product. Maintain firm footing and balance during operation.

CAUTION:

Inspect unit before each use. Replace damaged parts. Check for fuel leaks. Make sure all fasteners are in place and secure.

WARNING:

Keep the cutting blades away from any cords or extension cables. Check for foreign objects in the hedges such as wire fences before operation.

PREPARATION

Before each use, check the following items to ensure safe working conditions.

PROTECTIVE CLOTHING: make sure to wear the appropriate close-fitting protective clothing such as protective pants, gloves and safety shoes. Wear a safety helmet with integrated hearing protection and a face guard to provide protection against recoiling branches.

Before starting the unit, check that the trigger switches and automatically and quickly upon release. Also check that the cooling air vents are not obstructed and that both the front and rear handles are clean and dry.

CAUTION:

Remember blades coast after turn off.

The unit is equipped with a two-handed safety switch. Always hold the unit with both hands during operation. To operate the unit, depress and hold the front safety switch and depress the rear trigger switch. To stop unit, release either switch and the unit will stop.

WARNING:

Where the hedge trimmer is provided with adjustments to the angle of the cutting device and/or the length of the handle shaft never hold the cutter blades when making adjustments to the working position of the cutting device. Always ensure that the cutting device is correctly located in a designated working position before starting the engine.

STARTING AND STOPPING

To start a cold engine:

1. Slowly press the primer bulb 5-10 times.

NOTE: After the 7th press, fuel should be visible in the primer bulb. If it is not, continue to press the primer until you see fuel in the bulb.

2. Push the choke button in to set the choke to FULL CHOKE position.

NOTE: Do not squeeze the throttle trigger because the choke will be pop out automatically.

3. Place the unit on a firm, level surface. Push down on the front handle to securely hold the unit in place.
4. Pull the starter grip /cord until resistance is detected. Rapidly pull 3 to 5 times or until you hear engine turn over or begin to start.
5. If engine does not start, release choke by squeezing throttle trigger and the choke button pops out.
 - a. Engine is now in the run position.
 - b. Rapidly pull starter grip/cord until engine starts.
6. Allow the engine to run for 10 seconds, then squeeze throttle to provide fuel to engine and use for intended task.

NOTE: The choke button is only used when starting a cold engine. Never push the choke button in once the engine has been turned over or run. Otherwise the engine could be damaged.

Restart a warm engine:

NOTE: DO NOT push choke button in.

1. Make sure the primer bulb has fuel inside.
2. Rapidly pull starter/grip until engine starts.
3. Squeeze throttle to provide fuel to engine.

STOP THE ENGINE:

To stop the engine, depress the STOP switch to the stop position "STOP".

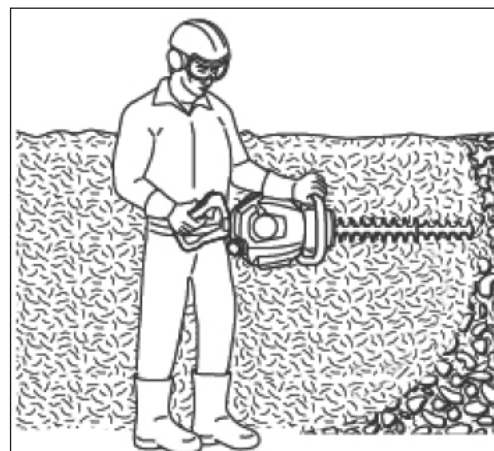
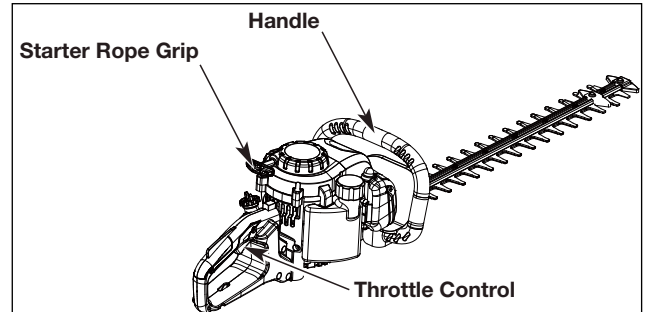
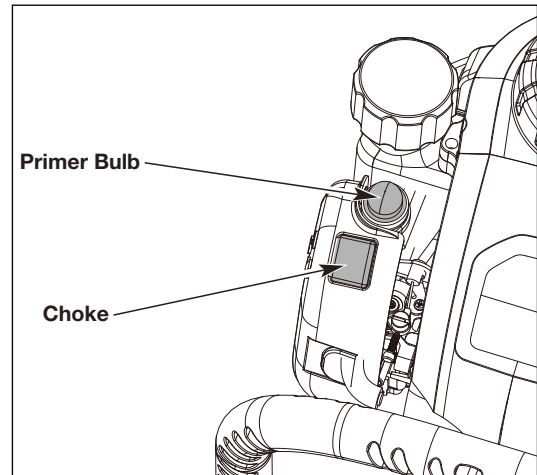
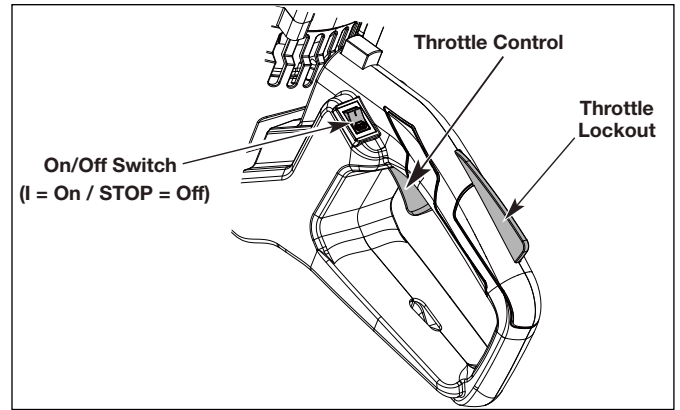
NOTE: This Stop switch will come back to the ON position automatically.

IF ASSISTANCE IS REQUIRED FOR THIS PRODUCT:

Do not return this product to the retail store where it was purchased. Please call our Customer Service Department for any issues you may have. For Help Call: 49 (0)40 854 10 40 - 14

HOLDING THE UNIT

- Stand in the operating position (hold the machine in front of your body.) Stand up straight. Do not bend over.
- Keep feet apart and firmly planted.
- Hold the shaft grip with the right hand. Keep the right arm slightly bent.
- Hold the handle with the left hand. Keep the left arm straight.
- Hold the unit at waist level.
- Do not over-reach; Keep all parts of your body away from the rotating cutting attachment and hot surfaces.



WARNING:

Do not operate the machine with a damaged or excessively worn cutting device;

CLEARING JAMS

If the blades get jammed by a wire or other obstruction and can't move, follow these important safety rules:

- NEVER reach for, or try to remove, jammed material while the engine is running.
- ALWAYS switch the unit off and disconnect the spark plug wire before clearing a jam.
- ALWAYS inspect the blades after clearing a jam to make sure all jammed material has been cleared, and to make sure blades are not damaged.

TRIMMING HEDGES

A hedge trimmer is primarily used to cut hedges, but can also be used on shrubs and bushes as well. For the best results, angle the blade of the hedge trimmer 15° from the targeted hedge.

A string or tie can be used as a guideline in order to create a level hedge. Position the string at the preferred height and cut everything that protrudes past it. The unit can be used in either direction. Use a sweeping motion back and forth for even cuts. Avoid cutting limbs and branches larger than 1 1/8 of an inch.

Do not force the hedge trimmer through heavy shrubbery. If the blades become jammed, immediately release the trigger and shut off the unit. Disconnect the spark plug wire before attempting to clear a jam. Always be careful of flying debris during operation. Wear gloves when trimming thorny or prickly foliage.

USING THE MACHINE



WARNING:

Engine housing can become hot during operation. DO NOT rest or place your arm, hand or any body part against the engine housing during operation.



WARNING:

Always wear the appropriate Personal Protective Equipment (PPE) when operating this machine.

- Make sure that your hands and feet do not come near the cutting attachment when the engine is running.
- If any foreign object is hit or if vibrations occur stop the machine immediately.
- Disconnect the HT lead from the spark plug.
- Check that the machine is not damaged. Repair any damage.
- If anything jams in the blades while you are working, switch off the engine and wait until it has stopped completely before cleaning the blades.
- Disconnect the HT lead from the spark plug.
- Always wear heavy-duty gloves when repairing the cutting attachment. This is extremely sharp and can easily cause personal injury.
- Work with a swinging action from the bottom upwards when trimming sides.

- When trimming the hedge, the engine should always face away from the hedge.
- Hold the machine as close to your body as possible to get the best balance.
- DO NOT rush the work but work steadily until all the branches have been cut back clearly.

MAINTENANCE

When servicing, use only identical replacement parts. Use of any other parts could create a hazard or cause product damage.

NOTE: Users are not allowed to set the carburettor or ignition, if further assistance is required, take the unit to a qualified service dealer.

WARNING:

To avoid serious personal injury, always stop the engine and allow it to cool before cleaning or maintaining the unit. Never perform cleaning or maintenance while the unit is running. Disconnect the spark plug wire to prevent the unit from starting accidentally.

WARNING:

Wear protective clothing and observe all safety instructions to prevent serious personal injury.

CLEANING

Use a small brush to clean the outside of the unit. Do not use strong detergents. Household cleaners that contain aromatic oils such as pine and lemon, and solvents such as kerosene, can damage plastic. Wipe off any moisture with a soft cloth.

Correct and regular cleaning is not only important for the safe use of this product, but also extends its life span.

LUBRICATION

For a long lifespan, make sure that the cutting blades are cleaned and lubricated at regular intervals in order to ensure the best possible performance. Routinely apply a thin film of lubricating oil.

SHARPENING THE BLADES

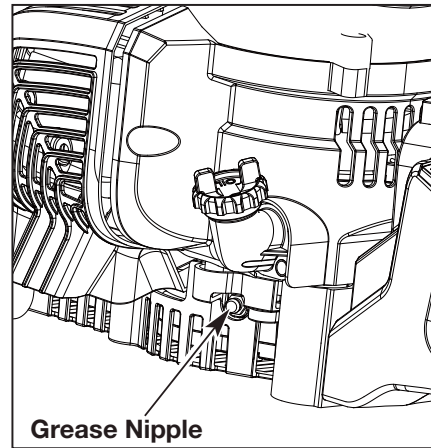
Disconnect the spark plug wire then clamp the blade assembly into a vise. Make sure the main body of the hedge trimmer is adequately supported to avoid damage.

File down the exposed cutting surface of each blade with an 8 inch smooth round file with a diameter of 1/4 to 7/32 of an inch. Make sure to retain the original angle of the cutter teeth when filing.

In order to file both sides of each cutter tooth, you may need to momentarily run the hedge trimmer until the opposing side of the cutter teeth are exposed.

Do not run the hedge while it is locked into the vise. Make sure all tools for sharpening have been removed before connecting the spark plug wire. Disconnect the spark plug wire and repeat the sharpening process for the newly exposed teeth.

GEARBOX GREASE



There is a grease nipple on the gearbox to fill the gearbox with grease. Use a grease gun to fill with grease after every 25 working hours.

MAINTENANCE SCHEDULE

Item	Hours of Operation
Check engine oil level	Every time before use
Check for loose/lost fasteners	
Check for damage	
Verify function of control elements	
Check fuel level	
Check for fuel/oil leaks	Every 20 hours
Engine oil replacement	
Lubricate blades	Every 5 hours
Sharpen blades	Every 20 hours
Clean air cleaner	Every 20 hours. Every 10 hours in dusty conditions
Check spark plug	Every 20 hours
Fill gearbox grease	Every 25 hours

REMARKS

- The maintenance interval is only a recommendation for machines in ordinary operating condition.
- If there are any abnormal signs from the machine, please do the proper inspection and maintenance immediately.
- If anything is unclear to you, contact our service team for help.
- All other repairs or maintenance which are not mentioned here should only be done by the Senix service team or authorized personnel.

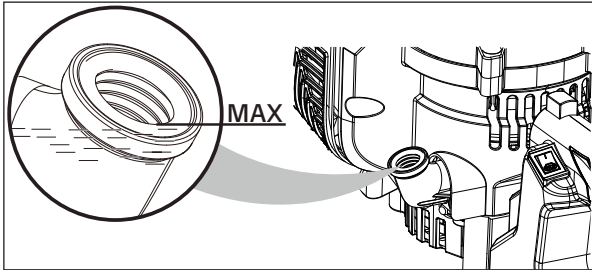
REPLACE ENGINE OIL

WARNING:

Old engine oil is considered special waste and has to be disposed according to your local environment protection regulation. Do not pour the oil into a garbage can, sewer, soil etc.

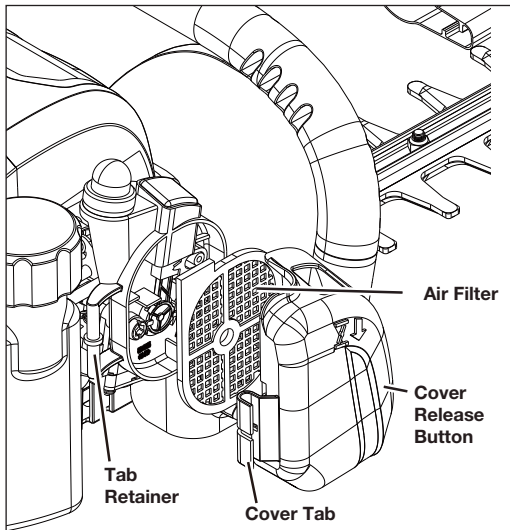
The engine oil replacement is easier if engine is warm (NOT HOT!).

1. Open the oil tank cap and drain the old oil to an approved container.
2. Return the engine to an upright position and refill with lubricant following the instructions in the ADDING/ CHECKING ENGINE OIL section in this manual.
3. Clean the oil dropped on the unit if necessary.



CLEAN AIR FILTER

The air filter element should be cleaned to provide the engine abundant clear air which aids in starting, power, and life time of the engine.

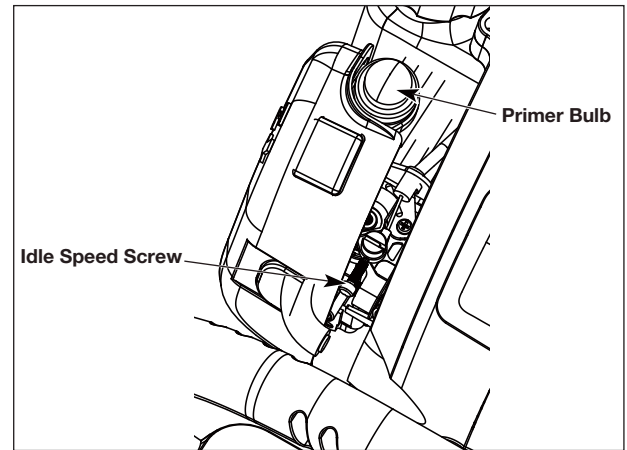


1. Remove the air filter cover. To remove, press the button on the top of the cover with thumb and gently push up the cover with index finger.
2. Remove the air filter.
3. If only cleaning of the air filter is necessary, take the air filter pad out and clean it with dry compressed air until all dust is removed. Wear protective goggles and mask to protect your health during this procedure.

Reinstall the air filter cover by closing the air filter cover over the button on the housing, then push the cover until it locks securely in the place.

NOTE: Make sure the filter is seated properly inside the cover. Incorrect installation will allow dirt to enter the engine, causing rapid engine wear.

ADJUST IDLE SPEED



! WARNING:

The cutting blades should never move at idle. Turn the idle speed screw counterclockwise to reduce the idle RPM and stop the cutting blades or contact customer support for adjustment and discontinue use until the repair is made. Serious personal injury could result from the cutting blades moving at idle.

! WARNING:

The cutting blades will move when adjusting the idle speed. Wear all protective clothing and keep all bystanders, children, and pets at least 50 ft. away. Make adjustments with the unit supported by hand so that the cutting blades do not contact the ground or any object. Keep all parts of your body away from the cutting blades and muffler. Failure to follow these instructions could result in serious personal injury.

If the engine will not idle properly:

1. Start the engine.
2. Release the throttle control and let the engine idle.
 - If the engine stops, increase the idle speed. Use a small Phillips screwdriver to turn the idle speed screw clockwise, 1/8 of a turn at a time, until the engine idles smoothly.
 - If the cutting blades move when the engine idles, reduce the idle speed. Turn the idle speed screw counterclockwise, 1/8 of a turn at a time, until the cutting blades stop moving.

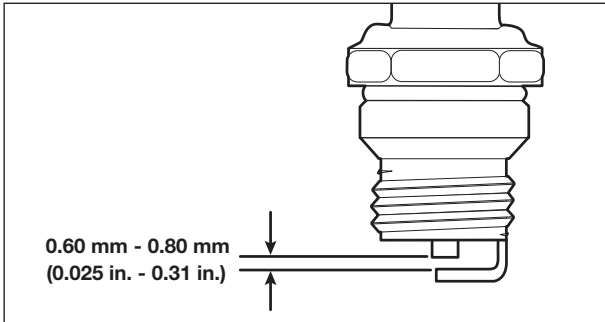
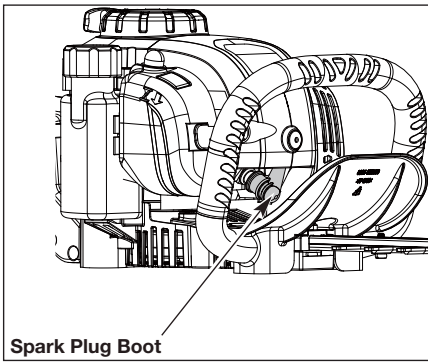
MAINTAINING THE SPARK PLUG

! CAUTION:

Do not remove the spark plug when the engine is hot.

! CAUTION:

Do not sand blast, scrape or clean spark plug electrodes. Grit in the engine could damage the cylinder.



1. Stop the engine and allow it to cool. Grasp the spark plug boot firmly and pull it from the spark plug.
2. Clean around the spark plug. Remove the spark plug from the cylinder head with a 5/8-inch socket, turning counterclockwise.

NOTE: A 5/8-inch spark plug wrench is supplied with this unit.

3. Inspect the spark plug. If the spark plug is cracked, fouled or dirty, replace it with replacement part #AM5C or an equivalent spark plug.
4. Use a feeler gauge to set the air gap at 0.6 mm - 0.8 mm (0.025 in. - 0.31 in.)
5. Install the spark plug in the cylinder head. Tighten the spark plug with a 5/8-inch socket, turning it clockwise until snug.

NOTE: If using a torque wrench, torque to 18 N•m (159 in.•lb.). Do not over tighten.

6. Reattach the spark plug boot.

STORAGE

- Never store a fueled unit where fumes may reach an open flame or spark.
- Allow the engine to cool before storing.
- Lock up the unit to prevent unauthorized use or damage.
- Store the unit in a dry, well-ventilated area.
- Store the unit out of the reach of children.
- Store the unit with the cutting blade scabbard installed.

Short-term Storage (1-2 weeks)

Store the unit in a horizontal position. If not possible, store the unit vertically with the engine at the top.

Long-term Storage

1. Remove the fuel cap, tip the unit and drain the fuel into an approved container. Reinstall the fuel cap.
2. Start the engine and allow it to run until it stalls. This ensures that all fuel has been drained from the carburetor.

3. Allow the engine to cool. Remove the spark plug and put 5 drops of any high quality motor oil into the cylinder. Pull the starter rope slowly to distribute the oil. Reinstall the spark plug.
4. Thoroughly clean the unit and inspect it for any loose or damaged parts. Repair or replace damaged parts and tighten loose screws, nuts or bolts.
5. Store the unit in a horizontal position. If horizontal storage is not possible, store unit vertically with engine at top.
6. Install the cutting blade scabbard.

Preparing the Unit for Use after Long-term Storage

1. Remove the spark plug. Tip the unit and drain all of the oil from the cylinder into an approved container. Reinstall the spark plug.
2. Change the oil. Refer to Changing the Oil.

NOTE: Do not use fuel that has been stored for more than 30 days. Dispose of old fuel and oil according to federal, state and local regulations.

TRANSPORTATION

CAUTION:

Install the guide bar cover when transporting to prevent personal injury.

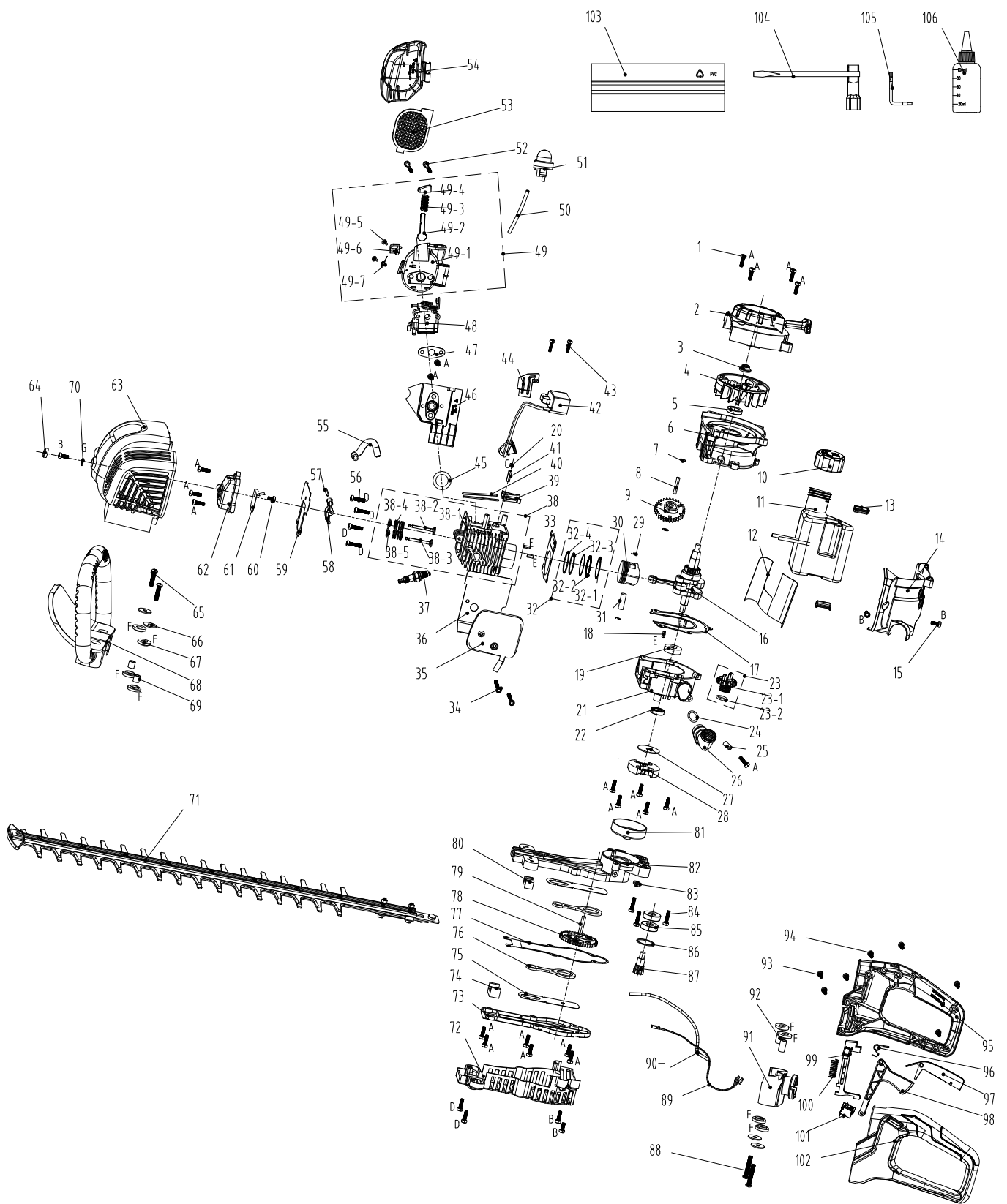
Transport the unit in a horizontal position. If not possible, transport the unit vertically with the engine at the top. Secure the unit to prevent damage during transport.

TROUBLESHOOTING

PROBLEM	SOLUTION
THE ENGINE WILL NOT START	
The fuel tank is empty	Fill the fuel tank with fresh fuel
The primer bulb was not pressed enough	Press the primer bulb 10 times
The fuel is old (over 30 days)	Drain the fuel tank and add fresh fuel
The spark plug is fouled	Replace the spark plug
THE ENGINE WILL NOT IDLE	
The air filter is dirty	Clean or replace the air filter
The fuel is old (over 30 days)	Drain the fuel tank and add fresh fuel
Idle speed screw needs adjustment	Turn idle speed screw clockwise to increase idle speed
THE ENGINE EMITS TOO MUCH SMOKE	
Too much oil in crankcase	Drain engine oil and refill with correct amount of engine lubricant
THE ENGINE WILL NOT ACCELERATE	
The fuel is old (over 30 days)	Drain the fuel tank and add fresh fuel
The cutting head is bound with grass	Stop the engine and clean the cutting head
The air filter is dirty	Clean or replace the air filter
THE ENGINE LACKS POWER OR STALLS	
The fuel is old (over 30 days)	Drain the fuel tank and add fresh fuel
The air filter is dirty	Clean or replace the air filter
The spark plug is fouled	Replace the spark plug
UNSATISFACTORY CUTTING PERFORMANCE	
Cutting blade is dull/damaged	Replace or contact a qualified service dealer
Cutting material exceeds capacity	Only cut material according to the capacity of the unit
EXCESSIVE VIBRATION/NOISE OR EXHAUST	
Bolts/Nuts are loose	Tighten
Gas/oil is incorrect	Empty unused fuel and oil. Refill with fresh fuel and oil

If further assistance is required, take the unit to a qualified service dealer.

PARTS

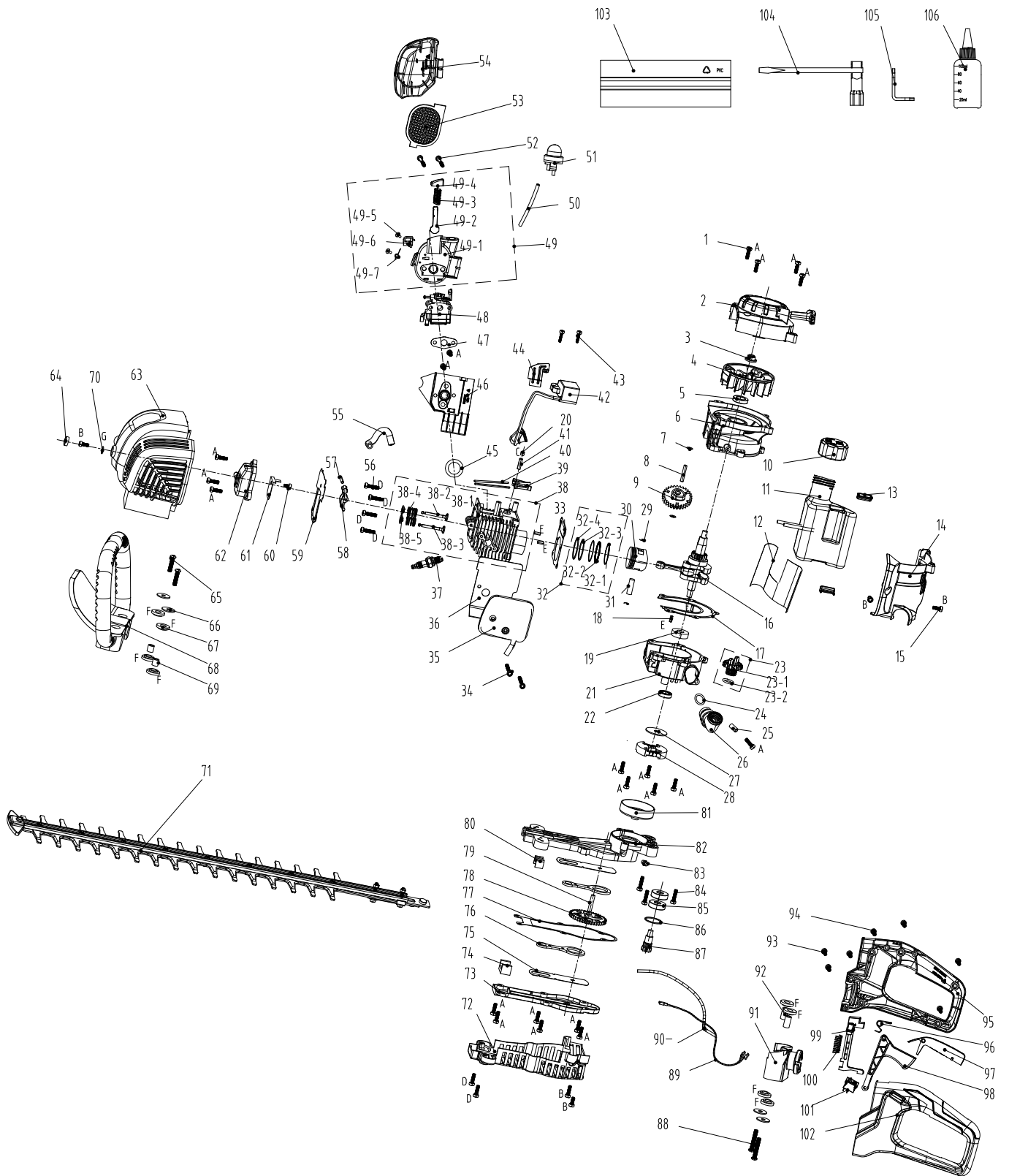


PARTS LIST

No.	Part #	Description	Qty.
1	207421000003	Hex Pan Head Screw	21
2	199096000103	Starter	1
3	8NG-08D	Hex Flange Nut	1
4	201088000017	Flywheel	1
5	8208-981503-0100020	Oil Seal	1
6	201126000054	Crankcase	1
7	8208-981502-0000000	Cam Washer	2
8	201026000354	Shaft	1
9	202002000046	Wheel Gear	1
10	199123000416	Oil Box Cap Assy	1
11	199124000182	Oil Box Assy'	1
12	8322-982001-0000010	Fuel Tank Heat Insulation Film	1
13	202017000069	Cushion Blocking	2
14	202030001578	Shroud	1
15	8SJJD05-12D	Pan Head Grooved Screw	5
16	8606-930501-0000000	Crankshaft	1
17	8341-982001-0000010	Crankcase Gasket	1
18	8PC40-10D	Cylindrical Pin	4
19	207390200006	Deep-Groove Ball Bearing	1
20	8SHCD06-05D	Inner Hex Screw	1
21	201126000057	Crankcase	1
22	8208-982001-0000010	Oil Seal	1
23	199999001518	Oil Ruler Component	1
23.1	202165000615	Oil Box Cap	1
23.2	8208-340105-0000020	Impact Piston O Ring	1
24	207270200006	O-Ring	1
25	8066-903201-0000000	Empty filter box bushing	1
26	202019000235	Joint	1
27	8202-967402-0000000	Big Flat Gasket	1
28	8127-930501-0000000	Clutch Assembly	1
29	8204-981001-0000000	Piston Pin Retainer	2
30	8603-982001-0000000	Piston	1
31	8605-982001-0000000	Piston Pin	1
32	201110000044	Piston Ring	1
33	8341-981501-0000020	Cylinder Gasket	1
34	8SJJD05-45D	Pan Head Grooved Screw	2
35	8614-930501-0000000	Muffler Assembly	1
36	8341-930501-0000000	Muffler Gasket	1
37	199999001321	Spark Plug	1
38	199999001376	Cylinder	1
39	8188-981501-0000000	Lower Arm	2
40	8087-981501-0000000	Tappet	2
41	8086-981503-0000000	Pin Roll	1
42	199037000043	Ignitor	1
43	8SJJD04-16D	Pan Head Grooved Screw	2
44	8181-950204-0000000	Wind Shield	1
45	299999000412	Washer	1
46	202999001788	Air-Intake Tube	1
47	8341-981503-0000010	Air-Intake Tube Gasket	1
48	199064000064	Carburetor	1
49	199999001547	Air Filter Assembly	1
49.1	202999001876	Air Filter Seat	1
49.2	8615-903003-0000110	Chock Plate	1
49.3	8324-981503-0000000	Button Spring	1
49.4	202003001848	Button	1

No.	Part #	Description	Qty.
49.5	8SNAB30-06D	Cross Groove Flange Screw	2
49.6	8615-903004-0000110	Controlling Slide Block	1
49.7	8215-981501-0000000	Slide Block Spring	1
50	234-1005	Tubing	0.09m
51	8336-965101-0000000	Gasoline pump	1
52	8SJJD05-55D	Pan Head Grooved Screw	2
53	8326-982001-0000010	Air Filter Net	1
54	202030001734	Shroud	1
55	202094000256	Bend Tube	1
56	8SJJD05-20D	Pan Head Grooved Screw	6
57	8086-981502-0000000	Pin Roll	1
58	8188-981503-0000000	Rocker Assembly	2
59	8341-982002-0000010	Cylinder Head Gasket	1
60	8SJJD05-08D	Pan Head Grooved Screw	1
61	8181-981503-0000010	Oil Baffle	1
62	8602-981503-0000000	Cylinder Head	1
63	202030001705	Shroud	1
64	8208-982003-0000020	Rubber Plug	1
65	8SJJD06-25D	Pan Head Grooved Screw	2
66	8202-830301-0000000	Fuel Tank ϕ 6 Gasket	4
67	202017000056	Cushion Blocking	8
68	202024002122	Handle	1
69	8066-930501-0000000	Front Supporting Tube	2
70	8202-000004-0000000	Blade Washer	1
71	L1908001	Blade Assy	1
72	202030001354	Shroud	1
73	8020-930501-0000000	Gear Box Cover	1
74	8349-930501-0000010	Wool Felt	1
75	8181-930501-0000000	Short Anti-Friction Gasket	2
76	8608-930501-0000000	Connecting Rod	2
77	8208-930501-0000010	Gear Box Gasket	1
78	8123-930502-0000000	Passive Wheel Gear	1
79	8086-930501-0000000	Central Shaft	1
80	8301-930501-0001710	Oil Retaining Block	1
81	8136-930501-0000000	Passive Plate	1
82	8146-930501-0000000	Gear Box Body	1
83	8065-931302-0000000	Straight Type Forced Filling Oil Cup	1
84	8SJEP05-23D	Screw And Gasket Components	3
85	8BC-281208-ST	Bearing	2
86	8CA-28B	Collar	1
87	8123-930501-0000000	Positive Wheel Gear	1
88	207421000002	Hex Pan Head Screw	2
89	8413-930501-0000010	Flameout Wire	1
90	8413-930502-0000010	Throttle Wire	1
91	202090000240	Rear Fixed Seat	1
92	201999001343	Rear Supporting Tube	2
93	8SJJB50-25D	Pan Head Grooved Screw	3
94	8SJJB50-16D	Pan Head Grooved Screw	4
95	202024002123	Handle	1
96	8342-930502-0000000	Throttle Trigger Torsional Spring	1
97	202999001867	Control Arm	1
98	202004000966	Trigger	1
99	202071000032	Locating Lump	1
100	8342-930501-0000000	Reset Spring	1
101	9042-923107-0016620	Switch	1
102	202024002125	Handle	1
103	202009000216	The Knife Set	1
104	8261-930501-0000000	Socket Wrench	1
105	8261-902101-0000000	Wrench	1
106	202999001666	Plastic Bottle	1
107	8162-9305054-001	Rating Label	1
108	8458-9305009-001	Manual	1
109	8452-9305008-001	Carton	1

PARTS



PARTS LIST

No.	Part #	Description	Qty.
1	207421000003	Hex Pan Head Screw	21
2	199096000103	Starter	1
3	8NG-08D	Hex Flange Nut	1
4	201088000017	Flywheel	1
5	8208-981503-0100020	Oil Seal	1
6	201126000054	Crankcase	1
7	8208-981502-0000000	Cam Washer	2
8	201026000354	Shaft	1
9	202002000046	Wheel Gear	1
10	199123000416	Oil Box Cap Assy	1
11	199124000182	Oil Box Assy'	1
12	8322-982001-0000010	Fuel Tank Heat Insulation Film	1
13	202017000069	Cushion Blocking	2
14	202030001578	Shroud	1
15	8SJJD05-12D	Pan Head Grooved Screw	5
16	8606-930501-0000000	Crankshaft	1
17	8341-982001-0000010	Crankcase Gasket	1
18	8PC40-10D	Cylindrical Pin	4
19	207390200006	Deep-Groove Ball Bearing	1
20	8SHCD06-05D	Inner Hex Screw	1
21	201126000057	Crankcase	1
22	8208-982001-0000010	Oil Seal	1
23	199999001518	Oil Ruler Component	1
23.1	202165000615	Oil Box Cap	1
23.2	8208-340105-0000020	Impact Piston O Ring	1
24	207270200006	O-Ring	1
25	8066-903201-0000000	Empty filter box bushing	1
26	202019000235	Joint	1
27	8202-967402-0000000	Big Flat Gasket	1
28	8127-930501-0000000	Clutch Assembly	1
29	8204-981001-0000000	Piston Pin Retainer	2
30	8603-982001-0000000	Piston	1
31	8605-982001-0000000	Piston Pin	1
32	201110000044	Piston Ring	1
33	8341-981501-0000020	Cylinder Gasket	1
34	8SJJD05-45D	Pan Head Grooved Screw	2
35	8614-930501-0000000	Muffler Assembly	1
36	8341-930501-0000000	Muffler Gasket	1
37	199999001321	Spark Plug	1
38	199999001376	Cylinder	1
39	8188-981501-0000000	Lower Arm	2
40	8087-981501-0000000	Tappet	2
41	8086-981503-0000000	Pin Roll	1
42	199037000043	Ignitor	1
43	8SJJD04-16D	Pan Head Grooved Screw	2
44	8181-950204-0000000	Wind Shield	1
45	299999000412	Washer	1
46	202999001788	Air-Intake Tube	1
47	8341-981503-0000010	Air-Intake Tube Gasket	1
48	199064000064	Carburetor	1
49	199999001547	Air Filter Assembly	1
49.1	202999001876	Air Filter Seat	1
49.2	8615-903003-0000110	Chock Plate	1
49.3	8324-981503-0000000	Button Spring	1
49.4	202003001848	Button	1
49.5	8SNAB30-06D	Cross Groove Flange Screw	2
49.6	8615-903004-0000110	Controlling Slide Block	1
49.7	8215-981501-0000000	Slide Block Spring	1
50	234-1005	Tubing	0.09m

No.	Part #	Description	Qty.
51	8336-965101-0000000	Gasoline pump	1
52	8SJJD05-55D	Pan Head Grooved Screw	2
53	8326-982001-0000010	Air Filter Net	1
54	202030001734	Shroud	1
55	202094000256	Bend Tube	1
56	8SJJD05-20D	Pan Head Grooved Screw	6
57	8086-981502-0000000	Pin Roll	1
58	8188-981503-0000000	Rocker Assembly	2
59	8341-982002-0000010	Cylinder Head Gasket	1
60	8SJJD05-08D	Pan Head Grooved Screw	1
61	8181-981503-0000010	Oil Baffle	1
62	8602-981503-0000000	Cylinder Head	1
63	202030001705	Shroud	1
64	8208-982003-0000020	Rubber Plug	1
65	8SJJD06-25D	Pan Head Grooved Screw	2
66	8202-830301-0000000	Fuel Tank Φ6 Gasket	4
67	202017000056	Cushion Blocking	8
68	202024002122	Handle	1
69	8066-930501-0000000	Front Supporting Tube	2
70	8202-000004-0000000	Blade Washer	1
71	L1908002	Blade Assy	1
72	202030001354	Shroud	1
73	8020-930501-0000000	Gear Box Cover	1
74	8349-930501-0000010	Wool Felt	1
75	8181-930501-0000000	Short Anti-Friction Gasket	2
76	8608-930501-0000000	Connecting Rod	2
77	8208-930501-0000010	Gear Box Gasket	1
78	8123-930502-0000000	Passive Wheel Gear	1
79	8086-930501-0000000	Central Shaft	1
80	8301-930501-0001710	Oil Retaining Block	1
81	8136-930501-0000000	Passive Plate	1
82	8146-930501-0000000	Gear Box Body	1
83	8065-931302-0000000	Straight Type Forced Filling Oil Cup	1
84	8SJEP05-23D	Screw And Gasket Components	3
85	8BC-281208-ST	Bearing	2
86	8CA-28B	Collar	1
87	8123-930501-0000000	Positive Wheel Gear	1
88	207421000002	Hex Pan Head Screw	2
89	8413-930501-0000010	Flameout Wire	1
90	8413-930502-0000010	Throttle Wire	1
91	202090000240	Rear Fixed Seat	1
92	201999001343	Rear Supporting Tube	2
93	8SJB50-25D	Pan Head Grooved Screw	3
94	8SJB50-16D	Pan Head Grooved Screw	4
95	202024002123	Handle	1
96	8342-930502-0000000	Throttle Trigger Torsional Spring	1
97	202999001867	Control Arm	1
98	202004000966	Trigger	1
99	202071000032	Locating Lump	1
100	8342-930501-0000000	Reset Spring	1
101	9042-923107-0016620	Switch	1
102	202024002125	Handle	1
103	202009000217	The Knife Set	1
104	8261-930501-0000000	Socket Wrench	1
105	8261-902101-0000000	Wrench	1
106	202999001666	Plastic Bottle	1
107	8162-9305055-001	Rating Label	1
108	8458-9305010-001	Manual	1
109	8452-9305009-001	Carton	1
106	202999001666	Plastic Bottle	1
107	8162-9305054-001	Rating Label	1
108	8458-9305009-001	Manual	1
109	8452-9305008-001	Carton	1

